



**INTERNATIONAL
GEMOLOGICAL
INSTITUTE**

ELECTRONIC COPY

**LABORATORY GROWN
DIAMOND REPORT**

**IGI LABORATORY GROWN
DIAMOND ID REPORT**

November 15, 2022

IGI Report Number **LG546230072**

CUSHION MODIFIED BRILLIANT

4.86 X 4.21 X 2.86 MM

Carat Weight 0.52 CARAT
Color Grade FANCY VIVID BLUE
Clarity Grade SI 1
Cut Grade EXCELLENT
Polish EXCELLENT
Symmetry VERY GOOD
Fluorescence NONE
Inscription(s) LABGROWN (IGI) LG546230072

Comments: As Grown - No indication of post-growth treatment.
This Laboratory Grown Diamond was created by High Pressure High Temperature (HPHT) growth process.

LABORATORY GROWN DIAMOND REPORT

IGI LABORATORY GROWN DIAMOND IDENTIFICATION REPORT

November 15, 2022

IGI Report Number **LG546230072**

Description **LABORATORY GROWN DIAMOND**

Shape and Cutting Style **CUSHION MODIFIED BRILLIANT**

Measurements **4.86 X 4.21 X 2.86 MM**

GRADING RESULTS

Carat Weight **0.52 CARAT**

Color Grade **FANCY VIVID BLUE**

Clarity Grade **SI 1**

Cut Grade **EXCELLENT**

ADDITIONAL GRADING INFORMATION

Polish **EXCELLENT**

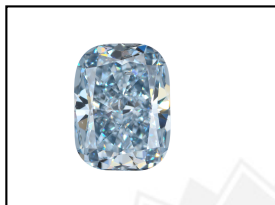
Symmetry **VERY GOOD**

Fluorescence **NONE**

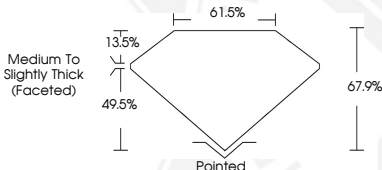
Inscription(s) **LABGROWN (IGI) LG546230072**

Comments: As Grown - No indication of post-growth treatment.

This Laboratory Grown Diamond was created by High Pressure High Temperature (HPHT) growth process.



LASERSCRIBESM
Sample Images Used



**IGI LABORATORY GROWN
DIAMOND ID REPORT**

November 15, 2022

IGI Report Number **LG546230072**

CUSHION MODIFIED BRILLIANT

4.86 X 4.21 X 2.86 MM

Carat Weight 0.52 CARAT
Color Grade FANCY VIVID BLUE
Clarity Grade SI 1
Cut Grade EXCELLENT
Polish EXCELLENT
Symmetry VERY GOOD
Fluorescence NONE
Inscription(s) LABGROWN (IGI) LG546230072

Comments: As Grown - No indication of post-growth treatment.
This Laboratory Grown Diamond was created by High Pressure High Temperature (HPHT) growth process.

THIS DOCUMENT WAS PRODUCED WITH THE FOLLOWING SECURITY MEASURES: SPECIAL DOCUMENT PAPER, INK SCREENS, WATERMARK, BACKGROUND DESIGN, HOLOGRAM AND OTHER SECURITY FEATURES NOT LISTED AND DO EXCEED DOCUMENT SECURITY INDUSTRY GUIDELINES.

For terms & conditions and to verify this report, please visit www.igi.org