



**INTERNATIONAL
GEMOLOGICAL
INSTITUTE**

ELECTRONIC COPY

**LABORATORY GROWN
DIAMOND REPORT**

LG546230038

**IGI LABORATORY GROWN
DIAMOND ID REPORT**

October 31, 2022
IGI Report Number **LG546230038**
CUSHION MODIFIED BRILLIANT
4.61 X 4.21 X 2.96 MM
Carat Weight 0.51 CARAT
Color Grade FANCY VIVID BLUE
Clarity Grade SI 1
Cut Grade VERY GOOD
Polish EXCELLENT
Symmetry VERY GOOD
Fluorescence NONE
Inscription(s) LABGROWN (IGI) LG546230038

Comments: As Grown - No indication of post-growth treatment.
This Laboratory Grown Diamond was created by High Pressure High Temperature (HPHT) growth process.

LABORATORY GROWN DIAMOND REPORT

IGI LABORATORY GROWN DIAMOND IDENTIFICATION REPORT

October 31, 2022
IGI Report Number LG546230038
Description LABORATORY GROWN DIAMOND
Shape and Cutting Style CUSHION MODIFIED BRILLIANT
Measurements 4.61 X 4.21 X 2.96 MM

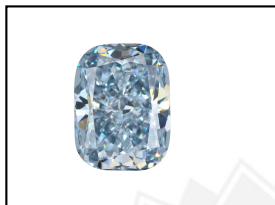
GRADING RESULTS

Carat Weight 0.51 CARAT
Color Grade FANCY VIVID BLUE
Clarity Grade SI 1
Cut Grade VERY GOOD

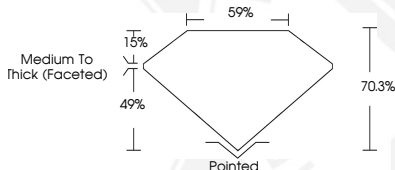
ADDITIONAL GRADING INFORMATION

Polish EXCELLENT
Symmetry VERY GOOD
Fluorescence NONE
Inscription(s) LABGROWN (IGI) LG546230038

Comments: As Grown - No indication of post-growth treatment.
This Laboratory Grown Diamond was created by High Pressure High Temperature (HPHT) growth process.



LASERSCRIBE SM
Sample Images Used



**IGI LABORATORY GROWN
DIAMOND ID REPORT**

October 31, 2022
IGI Report Number **LG546230038**
CUSHION MODIFIED BRILLIANT
4.61 X 4.21 X 2.96 MM
Carat Weight 0.51 CARAT
Color Grade FANCY VIVID BLUE
Clarity Grade SI 1
Cut Grade VERY GOOD
Polish EXCELLENT
Symmetry VERY GOOD
Fluorescence NONE
Inscription(s) LABGROWN (IGI) LG546230038

Comments: As Grown - No indication of post-growth treatment.
This Laboratory Grown Diamond was created by High Pressure High Temperature (HPHT) growth process.

THIS DOCUMENT WAS PRODUCED WITH THE FOLLOWING SECURITY MEASURES: SPECIAL DOCUMENT PAPER, INK SCREENS, WATERMARK, BACKGROUND DESIGN, HOLOGRAM AND OTHER SECURITY FEATURES NOT LISTED AND DO EXCEED DOCUMENT SECURITY INDUSTRY GUIDELINES.

For terms & conditions and to verify this report, please visit www.igi.org