



**INTERNATIONAL  
GEMOLOGICAL  
INSTITUTE**

**LABORATORY GROWN DIAMOND REPORT**

**IGI LABORATORY GROWN DIAMOND IDENTIFICATION REPORT**

October 6, 2022  
 IGI Report Number LG546229975  
 Description LABORATORY GROWN DIAMOND  
 Shape and Cutting Style ROUND BRILLIANT  
 Measurements 4.63 - 4.68 X 2.91 MM

**GRADING RESULTS**

Carat Weight 0.40 CARAT  
 Color Grade FANCY VIVID BLUE  
 Clarity Grade SI 2  
 Cut Grade EXCELLENT

**ADDITIONAL GRADING INFORMATION**

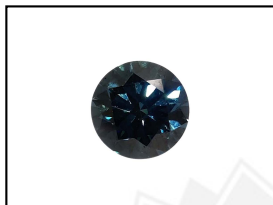
Polish EXCELLENT  
 Symmetry VERY GOOD  
 Fluorescence NONE  
 Inscription(s) LABGROWN (IGI) LG546229975

Comments: As Grown - No indication of post-growth treatment.  
 This Laboratory Grown Diamond was created by High Pressure High Temperature (HPHT) growth process.

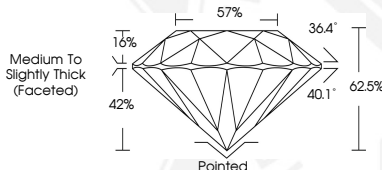
**ELECTRONIC COPY**

**LABORATORY GROWN  
DIAMOND REPORT**

**LG546229975**



**LASERSCRIBE<sup>SM</sup>**  
Sample Images Used



**IGI LABORATORY GROWN  
DIAMOND ID REPORT**

October 6, 2022  
 IGI Report Number LG546229975  
**ROUND BRILLIANT**  
**4.63 - 4.68 X 2.91 MM**  
 Carat Weight 0.40 CARAT  
 Color Grade FANCY VIVID BLUE  
 Clarity Grade SI 2  
 Cut Grade EXCELLENT  
 Polish EXCELLENT  
 Symmetry VERY GOOD  
 Fluorescence NONE  
 Inscription(s) LABGROWN (IGI) LG546229975

Comments: As Grown - No indication of post-growth treatment.  
 This Laboratory Grown Diamond was created by High Pressure High Temperature (HPHT) growth process.

**IGI LABORATORY GROWN  
DIAMOND ID REPORT**

October 6, 2022  
 IGI Report Number LG546229975  
**ROUND BRILLIANT**  
**4.63 - 4.68 X 2.91 MM**  
 Carat Weight 0.40 CARAT  
 Color Grade FANCY VIVID BLUE  
 Clarity Grade SI 2  
 Cut Grade EXCELLENT  
 Polish EXCELLENT  
 Symmetry VERY GOOD  
 Fluorescence NONE  
 Inscription(s) LABGROWN (IGI) LG546229975

Comments: As Grown - No indication of post-growth treatment.  
 This Laboratory Grown Diamond was created by High Pressure High Temperature (HPHT) growth process.

THIS DOCUMENT WAS PRODUCED WITH THE FOLLOWING SECURITY MEASURES: SPECIAL DOCUMENT PAPER, INK SCREENS, WATERMARK, BACKGROUND DESIGN, HOLOGRAM AND OTHER SECURITY FEATURES NOT LISTED AND DO EXCEED DOCUMENT SECURITY INDUSTRY GUIDELINES.

For terms & conditions and to verify this report, please visit [www.igi.org](http://www.igi.org)