



INTERNATIONAL GEMOLOGICAL INSTITUTE

ELECTRONIC COPY

LABORATORY GROWN DIAMOND REPORT

LG546229959

LABORATORY GROWN DIAMOND REPORT

IGI LABORATORY GROWN DIAMOND IDENTIFICATION REPORT

October 4, 2022
IGI Report Number LG546229959
Description LABORATORY GROWN DIAMOND
Shape and Cutting Style ROUND BRILLIANT
Measurements 4.85 - 4.86 X 3.00 MM

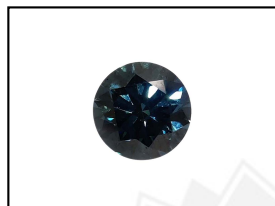
GRADING RESULTS

Carat Weight 0.44 CARAT
Color Grade FANCY VIVID BLUE
Clarity Grade VS 1
Cut Grade EXCELLENT

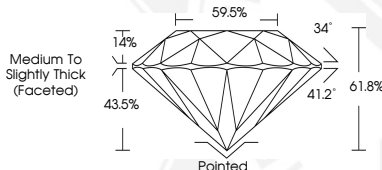
ADDITIONAL GRADING INFORMATION

Polish EXCELLENT
Symmetry EXCELLENT
Fluorescence NONE
Inscription(s) LABGROWN IGI LG546229959

Comments: As Grown - No indication of post-growth treatment.
This Laboratory Grown Diamond was created by High Pressure High Temperature (HPHT) growth process.



LASERSCRIBESM
Sample Images Used



IGI LABORATORY GROWN DIAMOND ID REPORT

October 4, 2022
IGI Report Number LG546229959
ROUND BRILLIANT
4.85 - 4.86 X 3.00 MM
Carat Weight 0.44 CARAT
Color Grade FANCY VIVID BLUE
Clarity Grade VS 1
Cut Grade EXCELLENT
Polish EXCELLENT
Symmetry EXCELLENT
Fluorescence NONE
Inscription(s) LABGROWN IGI LG546229959

Comments: As Grown - No indication of post-growth treatment.
This Laboratory Grown Diamond was created by High Pressure High Temperature (HPHT) growth process.

IGI LABORATORY GROWN DIAMOND ID REPORT

October 4, 2022
IGI Report Number LG546229959
ROUND BRILLIANT
4.85 - 4.86 X 3.00 MM
Carat Weight 0.44 CARAT
Color Grade FANCY VIVID BLUE
Clarity Grade VS 1
Cut Grade EXCELLENT
Polish EXCELLENT
Symmetry EXCELLENT
Fluorescence NONE
Inscription(s) LABGROWN IGI LG546229959

Comments: As Grown - No indication of post-growth treatment.
This Laboratory Grown Diamond was created by High Pressure High Temperature (HPHT) growth process.



THIS DOCUMENT WAS PRODUCED WITH THE FOLLOWING SECURITY MEASURES: SPECIAL DOCUMENT PAPER, INK SCREENS, WATERMARK, BACKGROUND DESIGN, HOLOGRAM AND OTHER SECURITY FEATURES NOT LISTED AND DO EXCEED DOCUMENT SECURITY INDUSTRY GUIDELINES.

For terms & conditions and to verify this report, please visit www.igi.org