



ELECTRONIC COPY

LABORATORY GROWN DIAMOND REPORT

September 20, 2022
IGI Report Number LG546228419
Description LABORATORY GROWN DIAMOND
Shape and Cutting Style PRINCESS CUT
Measurements 7.24 X 7.18 X 5.23 MM

GRADING RESULTS

Carat Weight 2.38 CARATS
Color Grade G
Clarity Grade VS 1
Cut Grade EXCELLENT

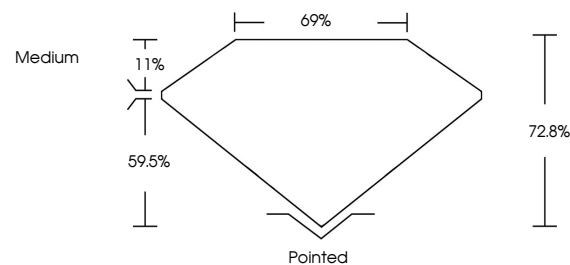
ADDITIONAL GRADING INFORMATION

Polish EXCELLENT
Symmetry EXCELLENT
Fluorescence NONE
Inscription(s) LABGROWN IGI LG546228419

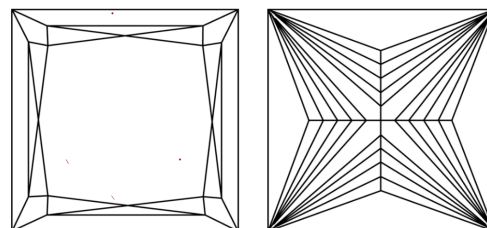
Comments: This Laboratory Grown Diamond was created by Chemical Vapor Deposition (CVD) growth process and may include post-growth treatment. Type IIa

LG546228419

PROPORTIONS



CLARITY CHARACTERISTICS

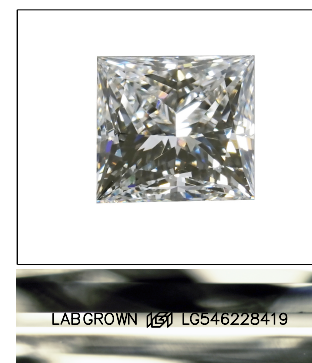


KEY TO SYMBOLS

Red symbols indicate internal characteristics. Green symbols indicate external characteristics.

GRADING SCALES

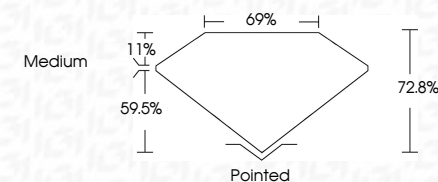
Table with 2 rows: COLOR GRADING SCALE (CL, NC, FT, VLT, LT) and CLARITY (10x) GRADING SCALE (FL, IF, VVS, VS, SI, I).



LASERSCRIBE SM

Sample Image Used

September 20, 2022
IGI Report Number LG546228419
Description LABORATORY GROWN DIAMOND
Shape and Cutting Style PRINCESS CUT
Measurements 7.24 X 7.18 X 5.23 MM
GRADING RESULTS
Carat Weight 2.38 CARATS
Color Grade G
Clarity Grade VS 1
Cut Grade EXCELLENT



ADDITIONAL GRADING INFORMATION

Polish EXCELLENT
Symmetry EXCELLENT
Fluorescence NONE
Inscription(s) LABGROWN IGI LG546228419

Comments: This Laboratory Grown Diamond was created by Chemical Vapor Deposition (CVD) growth process and may include post-growth treatment. Type IIa



Summary table of diamond specifications: September 20, 2022, IGI Report No. LG546228419, PRINCESS CUT, 2.38 CARATS, G, VS 1, EXCELLENT, 72.8%, 69%, Medium, Pointed, EXCELLENT, EXCELLENT, NONE, LABGROWN IGI LG546228419.

Comments: This Laboratory Grown Diamond was created by Chemical Vapor Deposition (CVD) growth process and may include post-growth treatment. Type IIa