



**ELECTRONIC COPY**

## LABORATORY GROWN DIAMOND REPORT

September 7, 2022	
IGI Report Number	LG546214968
Description	LABORATORY GROWN DIAMOND
Shape and Cutting Style	ROUND BRILLIANT
Measurements	8.93 - 8.96 X 5.53 MM

## GRADING RESULTS

Carat Weight	2.71 CARATS
Color Grade	G
Clarity Grade	VS 2
Cut Grade	IDEAL

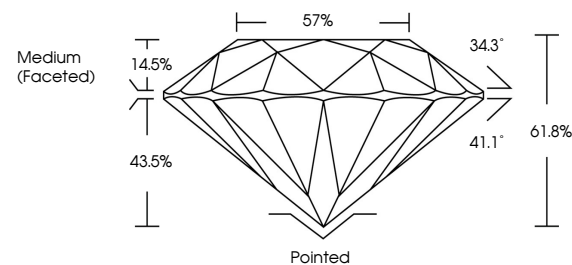
### ADDITIONAL GRADING INFORMATION

Polish	EXCELLENT
Symmetry	EXCELLENT
Fluorescence	NONE
Inscription(s)	LABGROWN 151 LG546214968

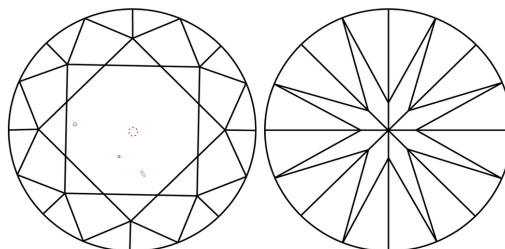
Comments: HEARTS & ARROWS  
This Laboratory Grown Diamond was created by  
Chemical Vapor Deposition (CVD) growth process and  
may include post-growth treatment.  
Type IIa

LG546214968

## PROPORTIONS



## CLARITY CHARACTERISTICS



### KEY TO SYMBOLS

Red symbols indicate internal characteristics.  
Green symbols indicate external characteristics.

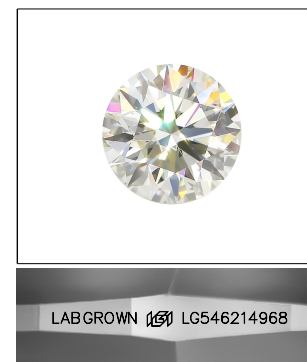


**www.igi.org**

LABORATORY GROWN  
DIAMOND REPORT

## GRADING SCALES

COLOR GRADING SCALE	CL		NC		FT		VLT		LT	
	COLORLESS D-F		NEAR COLORLESS G-J		FAINT K-M		VERY LIGHT N-R		LIGHT S-Z	
CLARITY (10x) GRADING SCALE	FL IF		VVS		VS		SI		I	
	FLAWLESS INTERNALLY FLAWLESS		VERY VERY SLIGHTLY INCLUDED		VERY SLIGHTLY INCLUDED		SLIGHTLY INCLUDED		INCLUDED	

LASERSCRIBE<sup>SM</sup>

Sample Image Used

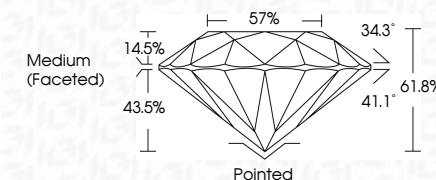


© IGI 2020, International Gemological Institute

FD - 10 20

LABORATORY GROWN DIAMOND REPORT

September 7, 2022	
IGI Report Number	LG546214968
Description	LABORATORY GROWN DIAMOND
Shape and Cutting Style	ROUND BRILLIANT
Measurements	8.93 - 8.96 X 5.53 MM
<b>GRADING RESULTS</b>	
Carat Weight	2.71 CARATS
Color Grade	G
Clarity Grade	VS 2
Cut Grade	IDEAL



### ADDITIONAL GRADING INFORMATION

Polish	EXCELLENT
Symmetry	EXCELLENT
Fluorescence	NONE
Inscription(s)	LABGROWN (15) LG546214968

Comments: HEARTS & ARROWS  
This Laboratory Grown Diamond was created by  
Chemical Vapor Deposition (CVD) growth process and  
may include post-growth treatment.  
Type IIa



<b>September 7, 2022</b>	<b>Report No.</b> LG5646214938
<b>GROWING REPORT</b>	
<b>ROUND BEHANT</b>	
<b>VS 2 VS 2</b>	<b>2.71 CARATS</b>
<b>IDeAL IDeAL</b>	<b>G</b>
<b>100% 57%</b>	
<b>Medium (Faceted)</b>	
<b>Culet</b>	<b>PoRTed</b>
<b>Polish</b>	<b>E'CELLENT</b>
<b>Symmetry</b>	<b>E'CELLENT</b>
<b>Fluorescence</b>	<b>NONE</b>
<b>Inscriptions(s)</b>	<b>LABGROWN LG5646214938</b>

**Comments:**  
**HEART & ARONS**  
The Laboratory Grown Diamond was created by Chemical Vapor Deposition (CVD) growth process may include post-growth treatment.