



**ELECTRONIC COPY**

## LABORATORY GROWN DIAMOND REPORT

|                         |  |
|-------------------------|--|
| August 31, 2022         |  |
| IGI Report Number       | LG544280360                                    |
| Description             | LABORATORY GROWN<br>DIAMOND                    |
| Shape and Cutting Style | CUT CORNERED RECTANGULAR<br>MODIFIED BRILLIANT |
| Measurements            | 9.58 X 7.54 X 5.10 MM                          |

## GRADING RESULTS

|               |             |
|---------------|-------------|
| Carat Weight  | 3.06 CARATS |
| Color Grade   | H           |
| Clarity Grade | VS 2        |

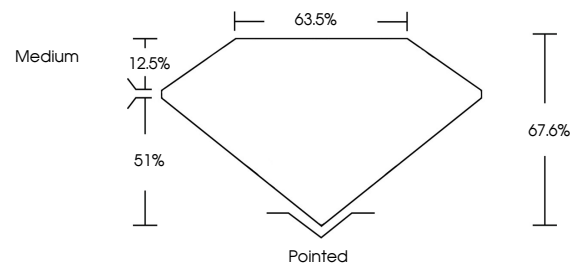
### ADDITIONAL GRADING INFORMATION

|              |           |
|--------------|-----------|
| Polish       | EXCELLENT |
| Symmetry     | EXCELLENT |
| Fluorescence | NONE      |

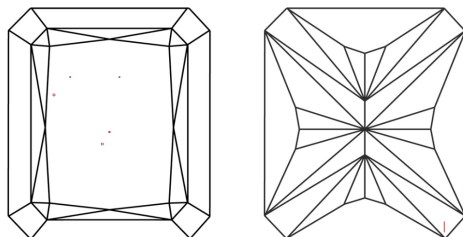
Inscription(s) **LABGROWN IGI LG544280360**  
 Comments: This Laboratory Grown Diamond was created by Chemical Vapor Deposition (CVD) growth process and may include post-growth treatment. Type IIa

LG544280360

## PROPORTIONS



## CLARITY CHARACTERISTICS

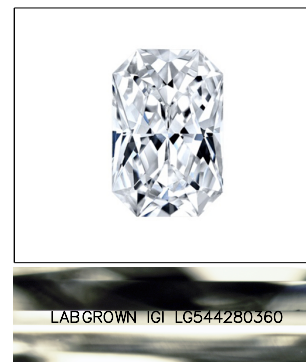


### KEY TO SYMBOLS

Red symbols indicate internal characteristics.  
Green symbols indicate external characteristics.

## GRADING SCALES

|                             |                              |    |                             |  |                        |  |                   |  |           |  |
|-----------------------------|------------------------------|----|-----------------------------|--|------------------------|--|-------------------|--|-----------|--|
| COLOR GRADING SCALE         | CL                           |    | NC                          |  | FT                     |  | VLT               |  | LT        |  |
|                             | COLORLESS D-F                |    | NEAR COLORLESS G-J          |  | FAINT K-M              |  | VERY LIGHT N-R    |  | LIGHT S-Z |  |
| CLARITY (10x) GRADING SCALE | FL                           | IF | VVS                         |  | VS                     |  | SI                |  | I         |  |
|                             | FLAWLESS INTERNALLY FLAWLESS |    | VERY VERY SLIGHTLY INCLUDED |  | VERY SLIGHTLY INCLUDED |  | SLIGHTLY INCLUDED |  | INCLUDED  |  |

LASERSCRIBE<sup>SM</sup>

Sample Image Used



© IGI 2020, International Gemological Institute

FD - 10 20

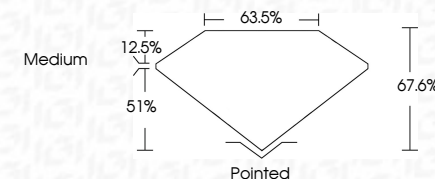
**www.igi.org**

## LABORATORY GROWN DIAMOND REPORT

|                         |   |
|-------------------------|---|
| August 31, 2022         |   |
| IGI Report Number       | LG544280360                                       |
| Description             | LABORATORY GROWN<br>DIAMOND                       |
| Shape and Cutting Style | CUT CORNERED<br>RECTANGULAR MODIFIED<br>BRILLIANT |
| Measurements            | 9.58 X 7.54 X 5.10 MM                             |

## GRADING RESULTS

|               |             |
|---------------|-------------|
| Carat Weight  | 3.06 CARATS |
| Color Grade   | H           |
| Clarity Grade | VS 2        |



### ADDITIONAL GRADING INFORMATION

|                |                          |
|----------------|--------------------------|
| Polish         | EXCELLENT                |
| Symmetry       | EXCELLENT                |
| Fluorescence   | NONE                     |
| Inscription(s) | LABGROWN IGI LG544280360 |

Inscription(s) LABGROWN IGI LG544280360

Comments: This Laboratory Grown Diamond was created by Chemical Vapor Deposition (CVD) growth process and may include post-growth treatment.  
Type IIa



|                           |   |                             |             |
|---------------------------|---|-----------------------------|-------------|
| August 31, 2022           | CU Report No. LG546280340   | 3.06 CARATS                 | 3.06 CARATS |
| GI COVERED RECI, MODIFIED |   | H                           |             |
| 1.58 x 7.54 x 6.10 MM     |   |                             |             |
| Color                     | Color Grade   |                             |             |
| Clarity                   | Clarity Grade   | Vs 2                        |             |
| Depth                     | Depth   | 67.6%                       |             |
| Table                     | Table   | 63.5%                       |             |
| Girdle                    | Girdle  | Medium                      |             |
| Culet                     | Culet   | Pointed                     |             |
| Polish                    | Polish  | EXCELLENT                   |             |
| Symmetry                  | Symmetry  | EXCELLENT                   |             |
| Fluorescence              | Fluorescence  | NONE                        |             |
| Inscriptions(s)           | Inscriptions(s)   | LABGROWN IG1<br>LG546280340 |             |
| Comments:                 | Comments:   |                             |             |
|                           | This Laboratory Grown Diamond was<br>certified as a Lab Grown Diamond<br>(CVD) growth process and may include<br>post-growth treatment.<br>Type Ila |                             |             |