



**INTERNATIONAL  
GEMOLOGICAL  
INSTITUTE**

**LABORATORY GROWN DIAMOND REPORT**

**IGI LABORATORY GROWN DIAMOND IDENTIFICATION REPORT**

October 31, 2022  
 IGI Report Number LG544249127  
 Description LABORATORY GROWN DIAMOND  
 Shape and Cutting Style ROUND BRILLIANT  
 Measurements 5.22 - 5.24 X 3.22 MM

**GRADING RESULTS**

Carat Weight 0.54 CARAT  
 Color Grade FANCY VIVID BLUE  
 Clarity Grade VVS 2  
 Cut Grade EXCELLENT

**ADDITIONAL GRADING INFORMATION**

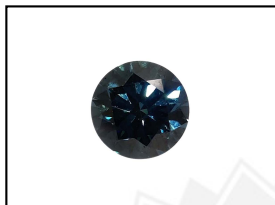
Polish VERY GOOD  
 Symmetry VERY GOOD  
 Fluorescence NONE  
 Inscription(s) LABGROWN IGI LG544249127

Comments: This Laboratory Grown Diamond was created by Chemical Vapor Deposition (CVD) process.  
 Type IIa. Indications of post-growth treatment.

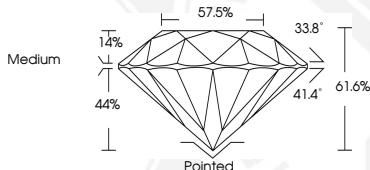
**ELECTRONIC COPY**

**LABORATORY GROWN  
DIAMOND REPORT**

**LG544249127**



**LASERSCRIBE<sup>SM</sup>**  
Sample Images Used



**IGI LABORATORY GROWN  
DIAMOND ID REPORT**

October 31, 2022  
 IGI Report Number LG544249127  
**ROUND BRILLIANT**  
**5.22 - 5.24 X 3.22 MM**  
 Carat Weight 0.54 CARAT  
 Color Grade FANCY VIVID BLUE  
 Clarity Grade VVS 2  
 Cut Grade EXCELLENT  
 Polish VERY GOOD  
 Symmetry VERY GOOD  
 Fluorescence NONE  
 Inscription(s) LABGROWN IGI LG544249127

Comments: This Laboratory Grown Diamond was created by Chemical Vapor Deposition (CVD) process.  
 Type IIa. Indications of post-growth treatment.

**IGI LABORATORY GROWN  
DIAMOND ID REPORT**

October 31, 2022  
 IGI Report Number LG544249127  
**ROUND BRILLIANT**  
**5.22 - 5.24 X 3.22 MM**  
 Carat Weight 0.54 CARAT  
 Color Grade FANCY VIVID BLUE  
 Clarity Grade VVS 2  
 Cut Grade EXCELLENT  
 Polish VERY GOOD  
 Symmetry VERY GOOD  
 Fluorescence NONE  
 Inscription(s) LABGROWN IGI LG544249127

Comments: This Laboratory Grown Diamond was created by Chemical Vapor Deposition (CVD) process.  
 Type IIa. Indications of post-growth treatment.

THIS DOCUMENT WAS PRODUCED WITH THE FOLLOWING SECURITY MEASURES: SPECIAL DOCUMENT PAPER, INK SCREENS, WATERMARK, BACKGROUND DESIGN, HOLOGRAM AND OTHER SECURITY FEATURES NOT LISTED AND DO EXCEED DOCUMENT SECURITY INDUSTRY GUIDELINES.

For terms & conditions and to verify this report, please visit [www.igi.org](http://www.igi.org)