



ELECTRONIC COPY

LABORATORY GROWN DIAMOND REPORT

August 26, 2022	
IGI Report Number	LG542221745
Description	LABORATORY GROWN DIAMOND
Shape and Cutting Style	ROUND BRILLIANT
Measurements	6.46 - 6.50 X 3.83 MM

GRADING RESULTS

Carat Weight	1.00 CARAT
Color Grade	FANCY VIVID BLUE
Clarity Grade	VS 2
Cut Grade	EXCELLENT

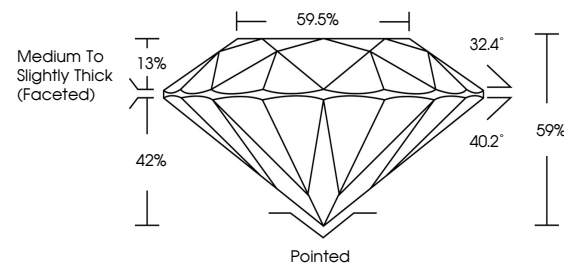
ADDITIONAL GRADING INFORMATION

Polish	EXCELLENT
Symmetry	EXCELLENT
Fluorescence	NONE
Inscription(s)	LABGROWN G LG542221745

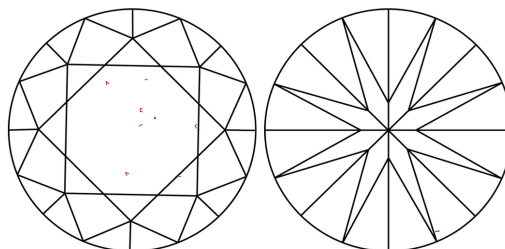
Comments: This Laboratory Grown Diamond was created by Chemical Vapor Deposition (CVD) growth process.
Indications of post-growth treatment.

LG542221745

PROPORTIONS



CLARITY CHARACTERISTICS



KEY TO SYMBOLS

Red symbols indicate internal characteristics.
Green symbols indicate external characteristics.

GRADING SCALES

COLOR GRADING SCALE	CL		NC	FT	VL	LT
	COLORLESS D-F		NEAR COLORLESS G-J	FAINT K-M	VERY LIGHT N-R	LIGHT S-Z
CLARITY (10x) GRADING SCALE	FL	IF	VVS	VS	SI	I
	FLAWLESS INTERNALLY FLAWLESS		VERY VERY SLIGHTLY INCLUDED	VERY SLIGHTLY INCLUDED	SLIGHTLY INCLUDED	INCLUDED

LASERSCRIBESM

Sample Image Used



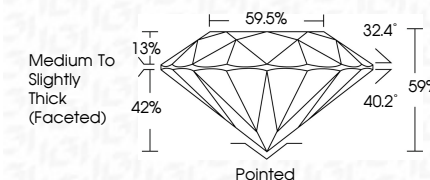
© IGI 2020, International Gemological Institute

FD - 10 20

www.igi.org

LABORATORY GROWN DIAMOND REPORT

August 26, 2022	
IGI Report Number	LG542221745
Description	LABORATORY GROWN DIAMOND
Shape and Cutting Style	ROUND BRILLIANT
Measurements	6.46 - 6.50 X 3.83 MM
GRADING RESULTS	
Carat Weight	1.00 CARAT
Color Grade	FANCY VIVID BLUE
Clarity Grade	VS 2
Cut Grade	EXCELLENT



ADDITIONAL GRADING INFORMATION

Polish	EXCELLENT
Symmetry	EXCELLENT
Fluorescence	NONE
Inscription(s)	LABGROWN IGI LG542221745

Comments: This Laboratory Grown Diamond was created by Chemical Vapor Deposition (CVD) growth process.
Indications of post-growth treatment.



August 26, 2022		FANCY	
GI Report No LG84221745		Carat Weight	
ROUND BRILLIANT		Color Grade	
4.49 - 4.65 X 6.50 X 3.83 MM		Clarity Grade	
		Cut Grade	
		Depth	
		Table	
		Girdle	
		Culet	
		Polish	
		Symmetry	
		Fluorescence	
		Description(s)	
		Comments:	
		This Laboratory Grown Diamond was analyzed by Chemical Vapor Deposition (CVD) growth technology.	

This Laboratory Grown Diamond was created by Chemical Vapor Deposition (CVD) growth process.