



ELECTRONIC COPY

LABORATORY GROWN DIAMOND REPORT

August 12, 2022	
IGI Report Number	LG541285345
Description	LABORATORY GROWN DIAMOND
Shape and Cutting Style	ROUND BRILLIANT
Measurements	8.57 - 8.61 X 5.23 MM

GRADING RESULTS

Carat Weight	2.37 CARATS
Color Grade	F
Clarity Grade	VVS 2
Cut Grade	IDEAL

ADDITIONAL GRADING INFORMATION

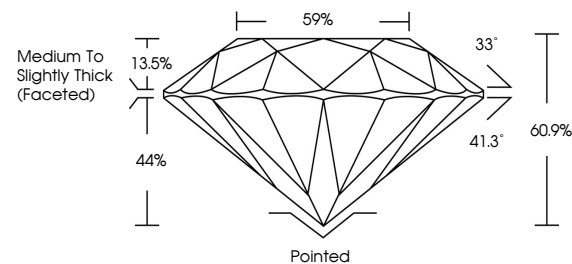
Polish	EXCELLENT
Symmetry	EXCELLENT
Fluorescence	NONE

Inscription(s) LABGROWN IGI LG541285345

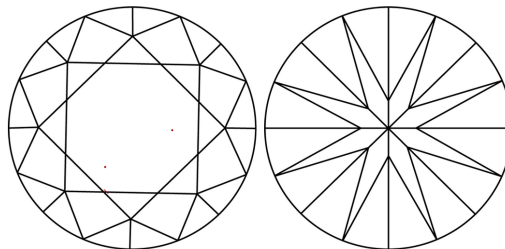
Comments: This Laboratory Grown Diamond was created by Chemical Vapor Deposition (CVD) growth process and may include post-growth treatment.
Type IIa

LG541285345

PROPORTIONS



CLARITY CHARACTERISTICS

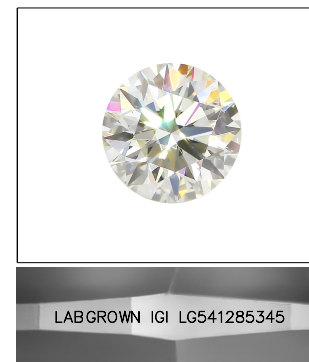


KEY TO SYMBOLS

Red symbols indicate internal characteristics.
Green symbols indicate external characteristics.

GRADING SCALES

COLOR GRADING SCALE	CL		NC	FT	VLT	LT
	COLORLESS D-F		NEAR COLORLESS G-J	FAINT K-M	VERY LIGHT N-R	LIGHT S-Z
CLARITY (10x) GRADING SCALE	FL	IF	VVS	VS	SI	I
	FLAWLESS INTERNALLY FLAWLESS		VERY VERY SLIGHTLY INCLUDED	VERY SLIGHTLY INCLUDED	SLIGHTLY INCLUDED	INCLUDED

LASERSCRIBESM

Sample Image Used

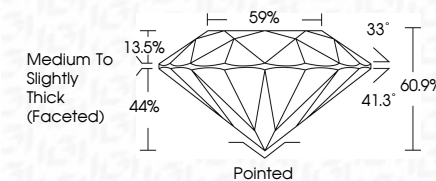


© IGI 2020, International Gemological Institute

FD - 10 20

LABORATORY GROWN DIAMOND REPORT

August 12, 2022	
IGI Report Number	LG541285345
Description	LABORATORY GROWN DIAMOND
Shape and Cutting Style	ROUND BRILLIANT
Measurements	8.57 - 8.61 X 5.23 MM
GRADING RESULTS	
Carat Weight	2.37 CARATS
Color Grade	F
Clarity Grade	VVS 2
Cut Grade	IDEAL



ADDITIONAL GRADING INFORMATION

Polish	EXCELLENT
Symmetry	EXCELLENT
Fluorescence	NONE
Inscription(s)	LABGROWN IGI LG541285345

Inscription(s) **LABGROWN IGI LG541285345**

Comments: This Laboratory Grown Diamond was created by Chemical Vapor Deposition (CVD) growth process and may include post-growth treatment.
Type IIa



August 12, 2022	GI Report No. LGS41285346	2.37 CARATS	F	VVS 2	Polished	None	This Laboratory Grown Diamond was created by Chemical Vapor Deposition (CVD) growth process and may include additional growth treatment. See fig.
ROUND BRILLIANT	L57 - 8.61 X 5.23 MM			IDEAL	EXCELLENT	NONE	
				61.0%	EXCELLENT	LARGEST INSET	
				59%	Medium to slightly Thick (Faceted)	LGS41285346	
		Carat Weight	Color Grade	Clarity Grade	Cut Grade	Symmetry	Fluorescence
					Depth	Polish	Inscriptions(s)
					Table		
					Girdle		
					Culet		

Comments: This Laboratory Grown Diamond was created by Chemical Vapor Deposition (CVD) growth process and may include post-growth treatment.