



**INTERNATIONAL
GEMOLOGICAL
INSTITUTE**

ELECTRONIC COPY

**LABORATORY GROWN
DIAMOND REPORT**

**IGI LABORATORY GROWN
DIAMOND ID REPORT**

September 15, 2022

IGI Report Number **LG539240816**

PEAR BRILLIANT

7.28 X 4.36 X 2.64 MM

Carat Weight 0.50 CARAT
Color Grade FANCY INTENSE PINK
Clarity Grade SI 1
Polish EXCELLENT
Symmetry VERY GOOD
Fluorescence SLIGHT
Inscription(s) LABGROWN IGI
LG539240816

Comments: This Laboratory Grown Diamond was created by Chemical Vapor Deposition (CVD) growth process. Indications of post-growth treatment.

LABORATORY GROWN DIAMOND REPORT

IGI LABORATORY GROWN DIAMOND IDENTIFICATION REPORT

September 15, 2022

IGI Report Number **LG539240816**

Description **LABORATORY GROWN DIAMOND**

Shape and Cutting Style **PEAR BRILLIANT**

Measurements **7.28 X 4.36 X 2.64 MM**

GRADING RESULTS

Carat Weight 0.50 CARAT

Color Grade FANCY INTENSE PINK

Clarity Grade SI 1

ADDITIONAL GRADING INFORMATION

Polish EXCELLENT

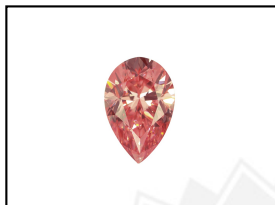
Symmetry VERY GOOD

Fluorescence SLIGHT

Inscription(s) LABGROWN IGI LG539240816

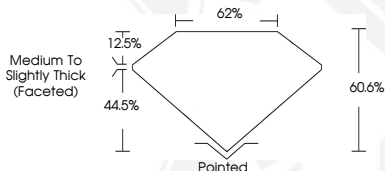
Comments: This Laboratory Grown Diamond was created by Chemical Vapor Deposition (CVD) growth process.

Indications of post-growth treatment.



LABGROWN IGI LG539240816

LASERSCRIBESM
Sample Images Used



THIS DOCUMENT WAS PRODUCED WITH THE FOLLOWING SECURITY MEASURES: SPECIAL DOCUMENT PAPER, INK SCREENS, WATERMARK, BACKGROUND DESIGN, HOLOGRAM AND OTHER SECURITY FEATURES NOT LISTED AND DO EXCEED DOCUMENT SECURITY INDUSTRY GUIDELINES.

For terms & conditions and to verify this report, please visit www.igi.org

**IGI LABORATORY GROWN
DIAMOND ID REPORT**

September 15, 2022

IGI Report Number **LG539240816**

PEAR BRILLIANT

7.28 X 4.36 X 2.64 MM

Carat Weight 0.50 CARAT
Color Grade FANCY INTENSE PINK
Clarity Grade SI 1
Polish EXCELLENT
Symmetry VERY GOOD
Fluorescence SLIGHT
Inscription(s) LABGROWN IGI
LG539240816

Comments: This Laboratory Grown Diamond was created by Chemical Vapor Deposition (CVD) growth process. Indications of post-growth treatment.