



**INTERNATIONAL
GEMOLOGICAL
INSTITUTE**

ELECTRONIC COPY

**LABORATORY GROWN
DIAMOND REPORT**

**IGI LABORATORY GROWN
DIAMOND ID REPORT**

September 15, 2022
IGI Report Number **LG539240812**

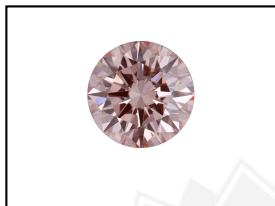
LABORATORY GROWN DIAMOND REPORT

LG539240812

ROUND BRILLIANT
5.09 - 5.12 X 3.11 MM
Carat Weight 0.51 CARAT
Color Grade FANCY INTENSE PINK
Clarity Grade VS 2
Cut Grade IDEAL
Polish EXCELLENT
Symmetry EXCELLENT
Fluorescence SLIGHT
Inscription(s) LABGROWN IGI
LG539240812

IGI LABORATORY GROWN DIAMOND IDENTIFICATION REPORT

September 15, 2022
IGI Report Number LG539240812
Description LABORATORY GROWN DIAMOND
Shape and Cutting Style ROUND BRILLIANT
Measurements 5.09 - 5.12 X 3.11 MM



LABGROWN IGI LG539240812

Comments: This Laboratory Grown Diamond was created by Chemical Vapor Deposition (CVD) growth process. Indications of post-growth treatment.

GRADING RESULTS

Carat Weight 0.51 CARAT
Color Grade FANCY INTENSE PINK
Clarity Grade VS 2
Cut Grade IDEAL

LASERSCRIBESM
Sample Images Used



ADDITIONAL GRADING INFORMATION

Polish EXCELLENT
Symmetry EXCELLENT
Fluorescence SLIGHT
Inscription(s) LABGROWN IGI LG539240812

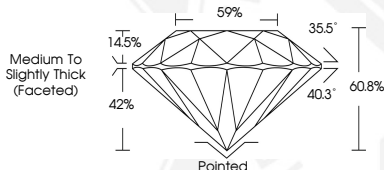
**IGI LABORATORY GROWN
DIAMOND ID REPORT**

September 15, 2022
IGI Report Number **LG539240812**

ROUND BRILLIANT
5.09 - 5.12 X 3.11 MM

Carat Weight 0.51 CARAT
Color Grade FANCY INTENSE PINK
Clarity Grade VS 2
Cut Grade IDEAL
Polish EXCELLENT
Symmetry EXCELLENT
Fluorescence SLIGHT
Inscription(s) LABGROWN IGI
LG539240812

Comments: This Laboratory Grown Diamond was created by Chemical Vapor Deposition (CVD) growth process. Indications of post-growth treatment.



THIS DOCUMENT WAS PRODUCED WITH THE FOLLOWING SECURITY MEASURES: SPECIAL DOCUMENT PAPER, INK SCREENS, WATERMARK, BACKGROUND DESIGN, HOLOGRAM AND OTHER SECURITY FEATURES NOT LISTED AND DO EXCEED DOCUMENT SECURITY INDUSTRY GUIDELINES.

For terms & conditions and to verify this report, please visit www.igi.org

Comments: This Laboratory Grown Diamond was created by Chemical Vapor Deposition (CVD) growth process. Indications of post-growth treatment.