



ELECTRONIC COPY

LABORATORY GROWN DIAMOND REPORT

November 16, 2022
IGI Report Number LG539240473
Description LABORATORY GROWN DIAMOND
Shape and Cutting Style ROUND BRILLIANT
Measurements 8.79 - 8.86 X 5.14 MM

GRADING RESULTS

Carat Weight 2.50 CARATS
Color Grade FANCY VIVID BLUE
Clarity Grade SI 1
Cut Grade EXCELLENT

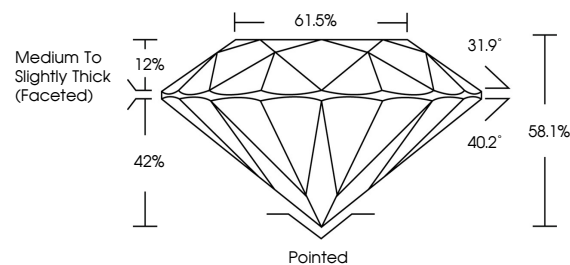
ADDITIONAL GRADING INFORMATION

Polish EXCELLENT
Symmetry EXCELLENT
Fluorescence VERY SLIGHT
Inscription(s) LABGROWN (IGI) LG539240473

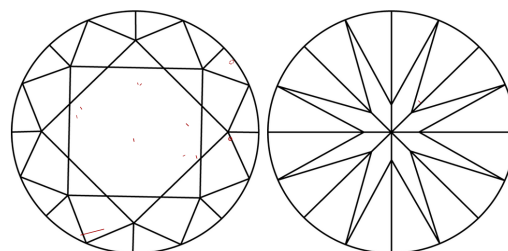
Comments: This Laboratory Grown Diamond was created by Chemical Vapor Deposition (CVD) growth process.
Indications of post-growth treatment.

LG539240473

PROPORTIONS



CLARITY CHARACTERISTICS



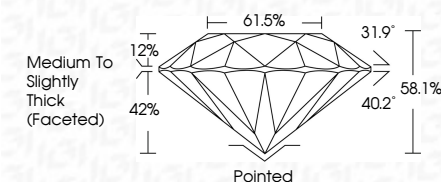
KEY TO SYMBOLS

Red symbols indicate internal characteristics.
Green symbols indicate external characteristics.

GRADING SCALES

Table showing color grading scales (CL, NC, FT, VLT, LT) and clarity (10x) grading scales (FL, IF, VVS, VS, SI, I) with their corresponding descriptions.

November 16, 2022
IGI Report Number LG539240473
Description LABORATORY GROWN DIAMOND
Shape and Cutting Style ROUND BRILLIANT
Measurements 8.79 - 8.86 X 5.14 MM
GRADING RESULTS
Carat Weight 2.50 CARATS
Color Grade FANCY VIVID BLUE
Clarity Grade SI 1
Cut Grade EXCELLENT



ADDITIONAL GRADING INFORMATION

Polish EXCELLENT
Symmetry EXCELLENT
Fluorescence VERY SLIGHT
Inscription(s) LABGROWN (IGI) LG539240473

Comments: This Laboratory Grown Diamond was created by Chemical Vapor Deposition (CVD) growth process.
Indications of post-growth treatment.



LASERSCRIBE SM
Sample Image Used



IGI

November 16, 2022
IGI Report No. LG539240473
ROUND BRILLIANT
8.79 - 8.86 X 5.14 MM
Carat Weight 2.50 CARATS
Color Grade FANCY VIVID BLUE
Clarity Grade SI 1
Cut Grade EXCELLENT
Depth 58.1%
Table 61.5%
Girdle Medium To Slightly Thick (Faceted)
Culet Pointed
Polish EXCELLENT
Symmetry EXCELLENT
Fluorescence VERY SLIGHT
Inscription(s) LABGROWN (IGI) LG539240473
Comments: This Laboratory Grown Diamond was created by Chemical Vapor Deposition (CVD) growth process.
Indications of post-growth treatment.