



# INTERNATIONAL GEMOLOGICAL INSTITUTE

ELECTRONIC COPY

## LABORATORY GROWN DIAMOND REPORT

LG539239893

### LABORATORY GROWN DIAMOND REPORT

#### IGI LABORATORY GROWN DIAMOND IDENTIFICATION REPORT

August 17, 2022  
IGI Report Number LG539239893  
Description LABORATORY GROWN DIAMOND  
Shape and Cutting Style ROUND BRILLIANT  
Measurements 6.12 - 6.16 X 4.02 MM

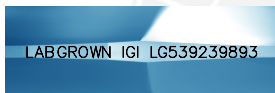
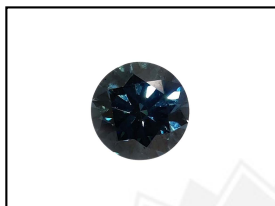
#### GRADING RESULTS

Carat Weight 0.96 CARAT  
Color Grade FANCY VIVID BLUE  
Clarity Grade SI 1  
Cut Grade VERY GOOD

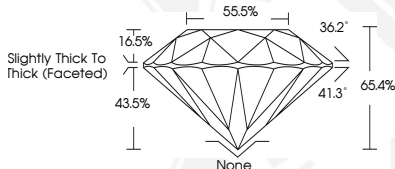
#### ADDITIONAL GRADING INFORMATION

Polish EXCELLENT  
Symmetry VERY GOOD  
Fluorescence NONE  
Inscription(s) LABGROWN IGI LG539239893

Comments: This Laboratory Grown Diamond was created by Chemical Vapor Deposition (CVD) growth process.  
Indications of post-growth treatment.



LASERSCRIBE<sup>SM</sup>  
Sample Images Used



#### IGI LABORATORY GROWN DIAMOND ID REPORT

August 17, 2022  
IGI Report Number LG539239893  
ROUND BRILLIANT  
6.12 - 6.16 X 4.02 MM  
Carat Weight 0.96 CARAT  
Color Grade FANCY VIVID BLUE  
Clarity Grade SI 1  
Cut Grade VERY GOOD  
Polish EXCELLENT  
Symmetry VERY GOOD  
Fluorescence NONE  
Inscription(s) LABGROWN IGI LG539239893

Comments: This Laboratory Grown Diamond was created by Chemical Vapor Deposition (CVD) growth process.  
Indications of post-growth treatment.

#### IGI LABORATORY GROWN DIAMOND ID REPORT

August 17, 2022  
IGI Report Number LG539239893  
ROUND BRILLIANT  
6.12 - 6.16 X 4.02 MM  
Carat Weight 0.96 CARAT  
Color Grade FANCY VIVID BLUE  
Clarity Grade SI 1  
Cut Grade VERY GOOD  
Polish EXCELLENT  
Symmetry VERY GOOD  
Fluorescence NONE  
Inscription(s) LABGROWN IGI LG539239893

Comments: This Laboratory Grown Diamond was created by Chemical Vapor Deposition (CVD) growth process.  
Indications of post-growth treatment.



THIS DOCUMENT WAS PRODUCED WITH THE FOLLOWING SECURITY MEASURES: SPECIAL DOCUMENT PAPER, INK SCREENS, WATERMARK, BACKGROUND DESIGN, HOLOGRAM AND OTHER SECURITY FEATURES NOT LISTED AND DO EXCEED DOCUMENT SECURITY INDUSTRY GUIDELINES.

For terms & conditions and to verify this report, please visit [www.igi.org](http://www.igi.org)