



**INTERNATIONAL
GEMOLOGICAL
INSTITUTE**

LABORATORY GROWN DIAMOND REPORT

IGI LABORATORY GROWN DIAMOND IDENTIFICATION REPORT

November 7, 2022
 IGI Report Number LG539238340
 Description LABORATORY GROWN DIAMOND
 Shape and Cutting Style ROUND BRILLIANT
 Measurements 5.00 - 5.04 X 3.19 MM

GRADING RESULTS

Carat Weight 0.50 CARAT
 Color Grade FANCY INTENSE PINK
 Clarity Grade VS 1
 Cut Grade VERY GOOD

ADDITIONAL GRADING INFORMATION

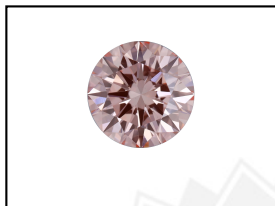
Polish EXCELLENT
 Symmetry VERY GOOD
 Fluorescence SLIGHT
 Inscription(s) LABGROWN IGI LG539238340

Comments: This Laboratory Grown Diamond was created by Chemical Vapor Deposition (CVD) growth process. Indications of post-growth treatment.

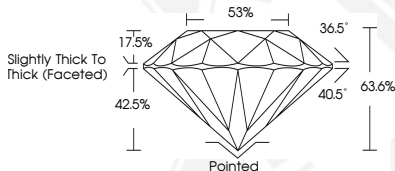
ELECTRONIC COPY

**LABORATORY GROWN
DIAMOND REPORT**

LG539238340



LASERSCRIBESM
Sample Images Used



**IGI LABORATORY GROWN
DIAMOND ID REPORT**

November 7, 2022
 IGI Report Number LG539238340
ROUND BRILLIANT
5.00 - 5.04 X 3.19 MM
 Carat Weight 0.50 CARAT
 Color Grade FANCY INTENSE PINK
 Clarity Grade VS 1
 Cut Grade VERY GOOD
 Polish EXCELLENT
 Symmetry VERY GOOD
 Fluorescence SLIGHT
 Inscription(s) LABGROWN IGI LG539238340

Comments: This Laboratory Grown Diamond was created by Chemical Vapor Deposition (CVD) growth process. Indications of post-growth treatment.

**IGI LABORATORY GROWN
DIAMOND ID REPORT**

November 7, 2022
 IGI Report Number LG539238340
ROUND BRILLIANT
5.00 - 5.04 X 3.19 MM
 Carat Weight 0.50 CARAT
 Color Grade FANCY INTENSE PINK
 Clarity Grade VS 1
 Cut Grade VERY GOOD
 Polish EXCELLENT
 Symmetry VERY GOOD
 Fluorescence SLIGHT
 Inscription(s) LABGROWN IGI LG539238340

Comments: This Laboratory Grown Diamond was created by Chemical Vapor Deposition (CVD) growth process. Indications of post-growth treatment.

THIS DOCUMENT WAS PRODUCED WITH THE FOLLOWING SECURITY MEASURES: SPECIAL DOCUMENT PAPER, INK SCREENS, WATERMARK, BACKGROUND DESIGN, HOLOGRAM AND OTHER SECURITY FEATURES NOT LISTED AND DO EXCEED DOCUMENT SECURITY INDUSTRY GUIDELINES.

For terms & conditions and to verify this report, please visit www.igi.org