



**INTERNATIONAL  
GEMOLOGICAL  
INSTITUTE**

**ELECTRONIC COPY**

**LABORATORY GROWN  
DIAMOND REPORT**

**IGI LABORATORY GROWN  
DIAMOND ID REPORT**

August 12, 2022  
IGI Report Number **LG539238315**  
**PEAR BRILLIANT**  
**6.88 X 4.43 X 2.81 MM**  
Carat Weight 0.50 CARAT  
Color Grade FANCY INTENSE PINK  
Clarity Grade SI 1  
Polish EXCELLENT  
Symmetry VERY GOOD  
Fluorescence SLIGHT  
Inscription(s) LABGROWN IGI  
LG539238315

Comments: This Laboratory Grown Diamond was created by Chemical Vapor Deposition (CVD) growth process. Indications of post-growth treatment.

**LABORATORY GROWN DIAMOND REPORT**

**IGI LABORATORY GROWN DIAMOND IDENTIFICATION REPORT**

August 12, 2022  
IGI Report Number LG539238315  
Description LABORATORY GROWN DIAMOND  
Shape and Cutting Style PEAR BRILLIANT  
Measurements 6.88 X 4.43 X 2.81 MM

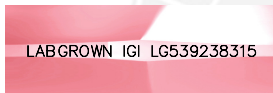
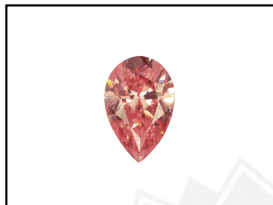
**GRADING RESULTS**

Carat Weight 0.50 CARAT  
Color Grade FANCY INTENSE PINK  
Clarity Grade SI 1

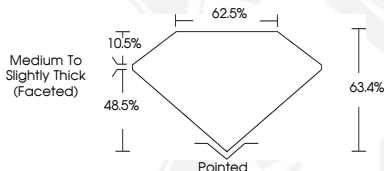
**ADDITIONAL GRADING INFORMATION**

Polish EXCELLENT  
Symmetry VERY GOOD  
Fluorescence SLIGHT  
Inscription(s) LABGROWN IGI LG539238315

Comments: This Laboratory Grown Diamond was created by Chemical Vapor Deposition (CVD) growth process. Indications of post-growth treatment.



**LASERSCRIBE<sup>SM</sup>**  
Sample Images Used



**IGI LABORATORY GROWN  
DIAMOND ID REPORT**

August 12, 2022  
IGI Report Number **LG539238315**  
**PEAR BRILLIANT**  
**6.88 X 4.43 X 2.81 MM**  
Carat Weight 0.50 CARAT  
Color Grade FANCY INTENSE PINK  
Clarity Grade SI 1  
Polish EXCELLENT  
Symmetry VERY GOOD  
Fluorescence SLIGHT  
Inscription(s) LABGROWN IGI  
LG539238315

Comments: This Laboratory Grown Diamond was created by Chemical Vapor Deposition (CVD) growth process. Indications of post-growth treatment.

THIS DOCUMENT WAS PRODUCED WITH THE FOLLOWING SECURITY MEASURES: SPECIAL DOCUMENT PAPER, INK SCREENS, WATERMARK, BACKGROUND DESIGN, HOLOGRAM AND OTHER SECURITY FEATURES NOT LISTED AND DO EXCEED DOCUMENT SECURITY INDUSTRY GUIDELINES.

For terms & conditions and to verify this report, please visit [www.igi.org](http://www.igi.org)