



**INTERNATIONAL
GEMOLOGICAL
INSTITUTE**

ELECTRONIC COPY

**LABORATORY GROWN
DIAMOND REPORT**

**IGI LABORATORY GROWN
DIAMOND ID REPORT**

August 12, 2022
IGI Report Number **LG539238277**
PEAR BRILLIANT
7.05 X 4.55 X 2.94 MM
Carat Weight 0.57 CARAT
Color Grade FANCY INTENSE PINK
Clarity Grade SI 2
Polish EXCELLENT
Symmetry VERY GOOD
Fluorescence SLIGHT
Inscription(s) LABGROWN IGI
LG539238277

LABORATORY GROWN DIAMOND REPORT

IGI LABORATORY GROWN DIAMOND IDENTIFICATION REPORT

August 12, 2022
IGI Report Number LG539238277
Description LABORATORY GROWN DIAMOND
Shape and Cutting Style PEAR BRILLIANT
Measurements 7.05 X 4.55 X 2.94 MM

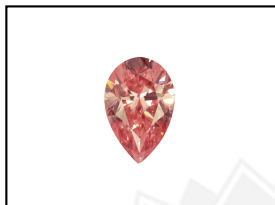
GRADING RESULTS

Carat Weight 0.57 CARAT
Color Grade FANCY INTENSE PINK
Clarity Grade SI 2

ADDITIONAL GRADING INFORMATION

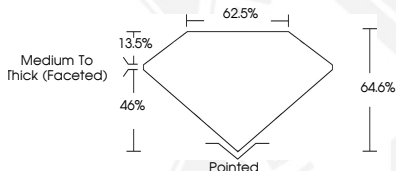
Polish EXCELLENT
Symmetry VERY GOOD
Fluorescence SLIGHT
Inscription(s) LABGROWN IGI LG539238277

Comments: This Laboratory Grown Diamond was created by
Chemical Vapor Deposition (CVD) growth process.
Indications of post-growth treatment.



LABGROWN IGI LG539238277

LASERSCRIBESM
Sample Images Used



Comments: This Laboratory Grown
Diamond was created by
Chemical Vapor Deposition (CVD)
growth process.
Indications of post-growth
treatment.

**IGI LABORATORY GROWN
DIAMOND ID REPORT**

August 12, 2022
IGI Report Number **LG539238277**
PEAR BRILLIANT
7.05 X 4.55 X 2.94 MM
Carat Weight 0.57 CARAT
Color Grade FANCY INTENSE PINK
Clarity Grade SI 2
Polish EXCELLENT
Symmetry VERY GOOD
Fluorescence SLIGHT
Inscription(s) LABGROWN IGI
LG539238277

Comments: This Laboratory Grown
Diamond was created by
Chemical Vapor Deposition (CVD)
growth process.
Indications of post-growth
treatment.

THIS DOCUMENT WAS PRODUCED WITH THE FOLLOWING SECURITY MEASURES: SPECIAL DOCUMENT PAPER, INK SCREENS, WATERMARK, BACKGROUND DESIGN, HOLOGRAM AND OTHER SECURITY FEATURES NOT LISTED AND DO EXCEED DOCUMENT SECURITY INDUSTRY GUIDELINES.

For terms & conditions and to verify this report, please visit www.igi.org