



INTERNATIONAL GEMOLOGICAL INSTITUTE

ELECTRONIC COPY

LABORATORY GROWN DIAMOND REPORT

LG539238056

IGI LABORATORY GROWN DIAMOND ID REPORT

August 16, 2022
IGI Report Number **LG539238056**
OVAL BRILLIANT
7.09 X 4.79 X 2.99 MM
Carat Weight 0.65 CARAT
Color Grade FANCY INTENSE PINK
Clarity Grade VS 2
Polish EXCELLENT
Symmetry VERY GOOD
Fluorescence SLIGHT
Inscription(s) LABGROWN IGI
LG539238056

Comments: This Laboratory Grown Diamond was created by Chemical Vapor Deposition (CVD) growth process. Indications of post-growth treatment.

LABORATORY GROWN DIAMOND REPORT

IGI LABORATORY GROWN DIAMOND IDENTIFICATION REPORT

August 16, 2022
IGI Report Number LG539238056
Description LABORATORY GROWN DIAMOND
Shape and Cutting Style OVAL BRILLIANT
Measurements 7.09 X 4.79 X 2.99 MM

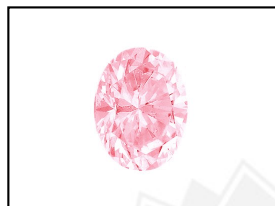
GRADING RESULTS

Carat Weight 0.65 CARAT
Color Grade FANCY INTENSE PINK
Clarity Grade VS 2

ADDITIONAL GRADING INFORMATION

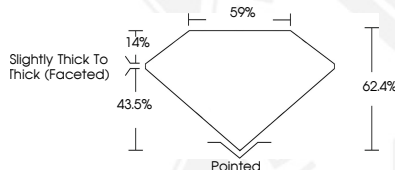
Polish EXCELLENT
Symmetry VERY GOOD
Fluorescence SLIGHT
Inscription(s) LABGROWN IGI LG539238056

Comments: This Laboratory Grown Diamond was created by Chemical Vapor Deposition (CVD) growth process. Indications of post-growth treatment.



LABGROWN IGI LG539238056

LASERSCRIBESM
Sample Images Used



IGI LABORATORY GROWN DIAMOND ID REPORT

August 16, 2022
IGI Report Number **LG539238056**
OVAL BRILLIANT
7.09 X 4.79 X 2.99 MM
Carat Weight 0.65 CARAT
Color Grade FANCY INTENSE PINK
Clarity Grade VS 2
Polish EXCELLENT
Symmetry VERY GOOD
Fluorescence SLIGHT
Inscription(s) LABGROWN IGI
LG539238056

Comments: This Laboratory Grown Diamond was created by Chemical Vapor Deposition (CVD) growth process. Indications of post-growth treatment.



THIS DOCUMENT WAS PRODUCED WITH THE FOLLOWING SECURITY MEASURES: SPECIAL DOCUMENT PAPER, INK SCREENS, WATERMARK, BACKGROUND DESIGN, HOLOGRAM AND OTHER SECURITY FEATURES NOT LISTED AND DO EXCEED DOCUMENT SECURITY INDUSTRY GUIDELINES.

For terms & conditions and to verify this report, please visit www.igi.org