



ELECTRONIC COPY

LABORATORY GROWN DIAMOND REPORT

Measurements 6.76 X 6.54 X 4.81 MM

GRADING RESULTS

Carat Weight 2.01 CARATS

Color Grade **FANCY VIVID PINK**

Clarity Grade	SI 1
---------------	------

ADDITIONAL GRADING INFORMATION

Polish EXCELLENT

Symmetry **VERY GOOD**

Fluorescence SLIGHT

Inscription(s) LABGROWN IGI LG539236468

Comments: This Laboratory Grown Diamond was created by Chemical Vapor Deposition (CVD) growth process.

Indications of post-growth treatment.

LG539236468

PROPORTIONS

Thick To Very Thick

72.5%

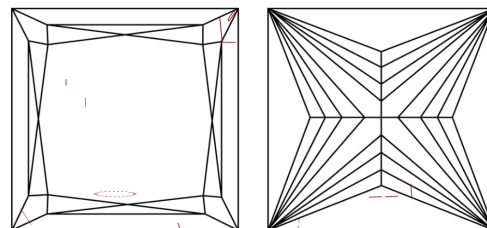
12%

55%

73.5%

Pointed

CLARITY CHARACTERISTICS



KEY TO SYMBOLS

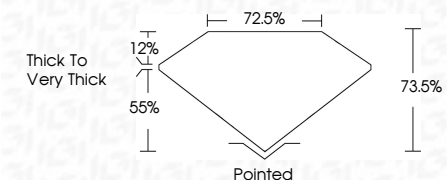
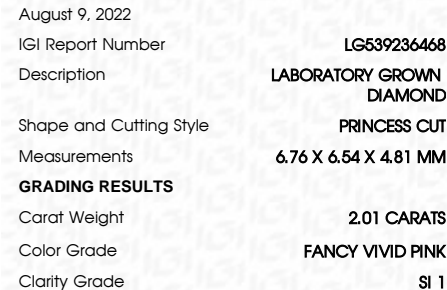
Red symbols indicate internal characteristics.
Green symbols indicate external characteristics.

GRADING SCALES

COLOR GRADING SCALE	CL		NC		FT		VLT		LT	
	COLORLESS D-F		NEAR COLORLESS G-J		FAINT K-M		VERY LIGHT N-R		LIGHT S-Z	
CLARITY (10x) GRADING SCALE	FL	IF	VVS		VS		SI		I	
	FLAWLESS INTERNALLY FLAWLESS		VERY VERY SLIGHTLY INCLUDED		VERY SLIGHTLY INCLUDED		SLIGHTLY INCLUDED		INCLUDED	

LASERSCRIBESM

Sample Image Used



ADDITIONAL GRADING INFORMATION

Polish **EXCELLENT**Symmetry **VERY GOOD**

Fluorescence SLIGHT

Inscription(s) LABGROWN IGI LG539236468

Comments: This Laboratory Grown Diamond was created by Chemical Vapor Deposition (CVD) growth process.
Indications of post-growth treatment.



IG

August 9, 2022	Report No. LG5923468	2.01 CARATS	Pointed
G/Report No. LG5923468	PRINCESS CUT	FANCY VIVID PINK	EXCELLENT
			VERY GOOD
			SIGHT
			LABGROWN IGI
			LG5923468
			Comments:
			This Laboratory Grown Diamond was
			found to be a CVD growth process.
			indications of post-growth treatment.