



**INTERNATIONAL
GEMOLOGICAL
INSTITUTE**

ELECTRONIC COPY

**LABORATORY GROWN
DIAMOND REPORT**

**IGI LABORATORY GROWN
DIAMOND ID REPORT**

August 10, 2022
IGI Report Number **LG59236393**
PEAR BRILLIANT
6.69 X 4.43 X 2.86 MM
Carat Weight 0.50 CARAT
Color Grade FANCY INTENSE PINK
Clarity Grade SI 1
Polish EXCELLENT
Symmetry VERY GOOD
Fluorescence SLIGHT
Inscription(s) LABGROWN IGI
LG59236393

Comments: This Laboratory Grown Diamond was created by Chemical Vapor Deposition (CVD) growth process. Indications of post-growth treatment.

LABORATORY GROWN DIAMOND REPORT

IGI LABORATORY GROWN DIAMOND IDENTIFICATION REPORT

August 10, 2022
IGI Report Number **LG59236393**
Description **LABORATORY GROWN DIAMOND**
Shape and Cutting Style **PEAR BRILLIANT**
Measurements **6.69 X 4.43 X 2.86 MM**

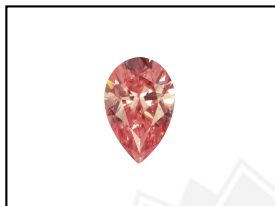
GRADING RESULTS

Carat Weight **0.50 CARAT**
Color Grade **FANCY INTENSE PINK**
Clarity Grade **SI 1**

ADDITIONAL GRADING INFORMATION

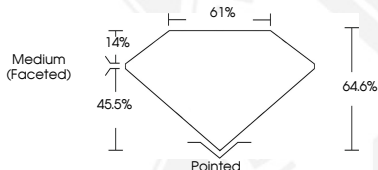
Polish **EXCELLENT**
Symmetry **VERY GOOD**
Fluorescence **SLIGHT**
Inscription(s) **LABGROWN IGI LG59236393**

Comments: This Laboratory Grown Diamond was created by Chemical Vapor Deposition (CVD) growth process. Indications of post-growth treatment.



LABGROWN IGI LG59236393

LASERSCRIBESM
Sample Images Used



**IGI LABORATORY GROWN
DIAMOND ID REPORT**

August 10, 2022
IGI Report Number **LG59236393**
PEAR BRILLIANT
6.69 X 4.43 X 2.86 MM
Carat Weight 0.50 CARAT
Color Grade FANCY INTENSE PINK
Clarity Grade SI 1
Polish EXCELLENT
Symmetry VERY GOOD
Fluorescence SLIGHT
Inscription(s) LABGROWN IGI
LG59236393

Comments: This Laboratory Grown Diamond was created by Chemical Vapor Deposition (CVD) growth process. Indications of post-growth treatment.

THIS DOCUMENT WAS PRODUCED WITH THE FOLLOWING SECURITY MEASURES: SPECIAL DOCUMENT PAPER, INK SCREENS, WATERMARK, BACKGROUND DESIGN, HOLOGRAM AND OTHER SECURITY FEATURES NOT LISTED AND DO EXCEED DOCUMENT SECURITY INDUSTRY GUIDELINES.

For terms & conditions and to verify this report, please visit www.igi.org