



**INTERNATIONAL
GEMOLOGICAL
INSTITUTE**

ELECTRONIC COPY

**LABORATORY GROWN
DIAMOND REPORT**

**IGI LABORATORY GROWN
DIAMOND ID REPORT**

August 10, 2022
IGI Report Number **LG539236389**
PEAR BRILLIANT
7.20 X 4.29 X 2.67 MM
Carat Weight 0.51 CARAT
Color Grade FANCY INTENSE PINK
Clarity Grade VS 1
Polish EXCELLENT
Symmetry VERY GOOD
Fluorescence SLIGHT
Inscription(s) LABGROWN IGI
LG539236389

Comments: This Laboratory Grown Diamond was created by Chemical Vapor Deposition (CVD) growth process. Indications of post-growth treatment.

LABORATORY GROWN DIAMOND REPORT

IGI LABORATORY GROWN DIAMOND IDENTIFICATION REPORT

August 10, 2022
IGI Report Number LG539236389
Description LABORATORY GROWN DIAMOND
Shape and Cutting Style PEAR BRILLIANT
Measurements 7.20 X 4.29 X 2.67 MM

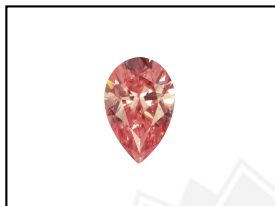
GRADING RESULTS

Carat Weight 0.51 CARAT
Color Grade FANCY INTENSE PINK
Clarity Grade VS 1

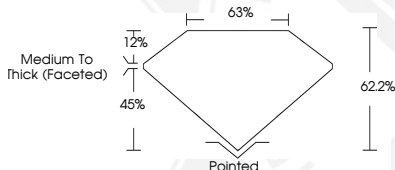
ADDITIONAL GRADING INFORMATION

Polish EXCELLENT
Symmetry VERY GOOD
Fluorescence SLIGHT
Inscription(s) LABGROWN IGI LG539236389

Comments: This Laboratory Grown Diamond was created by Chemical Vapor Deposition (CVD) growth process. Indications of post-growth treatment.



LASERSCRIBESM
Sample Images Used



**IGI LABORATORY GROWN
DIAMOND ID REPORT**

August 10, 2022
IGI Report Number **LG539236389**
PEAR BRILLIANT
7.20 X 4.29 X 2.67 MM
Carat Weight 0.51 CARAT
Color Grade FANCY INTENSE PINK
Clarity Grade VS 1
Polish EXCELLENT
Symmetry VERY GOOD
Fluorescence SLIGHT
Inscription(s) LABGROWN IGI
LG539236389

Comments: This Laboratory Grown Diamond was created by Chemical Vapor Deposition (CVD) growth process. Indications of post-growth treatment.

THIS DOCUMENT WAS PRODUCED WITH THE FOLLOWING SECURITY MEASURES: SPECIAL DOCUMENT PAPER, INK SCREENS, WATERMARK, BACKGROUND DESIGN, HOLOGRAM AND OTHER SECURITY FEATURES NOT LISTED AND DO EXCEED DOCUMENT SECURITY INDUSTRY GUIDELINES.

For terms & conditions and to verify this report, please visit www.igi.org