



ELECTRONIC COPY

LABORATORY GROWN DIAMOND REPORT

July 29, 2022	
IGI Report Number	LG539218991
Description	LABORATORY GROWN DIAMOND
Shape and Cutting Style	ROUND BRILLIANT
Measurements	7.66 - 7.68 X 4.55 MM

GRADING RESULTS

Carat Weight	1.64 CARAT
Color Grade	F
Clarity Grade	VS 1
Cut Grade	IDEAL

ADDITIONAL GRADING INFORMATION

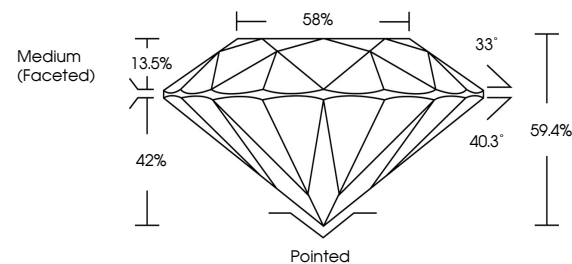
Polish	EXCELLENT
Symmetry	EXCELLENT
Fluorescence	NONE

Inscription(s) LABGROWN IGI LG539218991

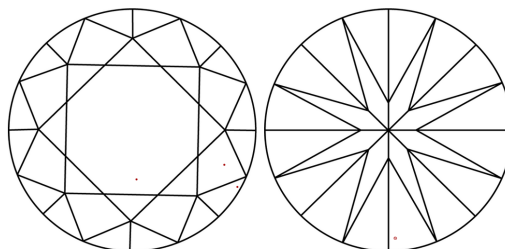
Comments: This Laboratory Grown Diamond was created by Chemical Vapor Deposition (CVD) growth process and may include post-growth treatment.
Type IIa

LG539218991

PROPORTIONS



CLARITY CHARACTERISTICS

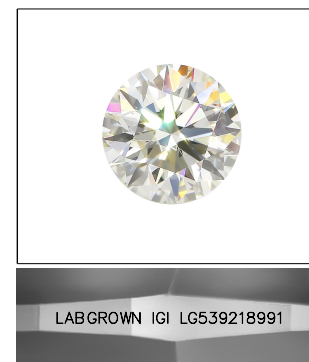


KEY TO SYMBOLS

Red symbols indicate internal characteristics.
Green symbols indicate external characteristics.

GRADING SCALES

COLOR GRADING SCALE	CL		NC	FT	VLT	LT
	COLORLESS D-F		NEAR COLORLESS G-J	FAINT K-M	VERY LIGHT N-R	LIGHT S-Z
CLARITY (10x) GRADING SCALE	FL	IF	VVS	VS	SI	I
	FLAWLESS INTERNALLY FLAWLESS		VERY VERY SLIGHTLY INCLUDED	VERY SLIGHTLY INCLUDED	SLIGHTLY INCLUDED	INCLUDED

LASERSCRIBESM

Sample Image Used



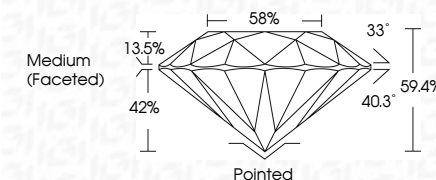
© IGI 2020, International Gemological Institute

FD - 10 20

www.igi.org

LABORATORY GROWN DIAMOND REPORT

July 29, 2022	
IGI Report Number	LG539218991
Description	LABORATORY GROWN DIAMOND
Shape and Cutting Style	ROUND BRILLIANT
Measurements	7.66 - 7.68 X 4.55 MM
GRADING RESULTS	
Carat Weight	1.64 CARAT
Color Grade	F
Clarity Grade	VS 1
Cut Grade	IDEAL



ADDITIONAL GRADING INFORMATION

Polish	EXCELLENT
Symmetry	EXCELLENT
Fluorescence	NONE
Inscription(s)	LABGROWN IGI LG539218991

Inscription(s) LABGROWN IGI LG539218991

Comments: This Laboratory Grown Diamond was created by Chemical Vapor Deposition (CVD) growth process and may include post-growth treatment.
Type IIa



July 29, 2022	G Report No LG539218991	YOUNG BRILLIANT	1.64 CARAT F VS 1 IDEAL 59.4% 58%	Medium (Foote)	Pointed Excellent	Excellent	None	LABSGROWN LG1 LG539218991	Comments:
		Carat Weight			Culet	Symmetry	Fluorescence		The Laboratory Grown Diamond was created by Chemical Vapor Deposition (CVD) growth process and may include post-growth treatment.
		Color Grade			Pole	Polish	Inclusions(3)		Type IId
		Clarity Grade			Table				
		Depth			Girdle				