



ELECTRONIC COPY

LABORATORY GROWN DIAMOND REPORT

July 29, 2022
 IGI Report Number **LG538297340**
 Description **LABORATORY GROWN
DIAMOND**
 Shape and Cutting Style **CUSHION BRILLIANT**
 Measurements **7.08 X 5.96 X 4.16 MM**

GRADING RESULTS

Carat Weight **1.31 CARAT**
 Color Grade **D**
 Clarity Grade **VVS 2**

ADDITIONAL GRADING INFORMATION

Polish **EXCELLENT**
 Symmetry **EXCELLENT**
 Fluorescence **NONE**

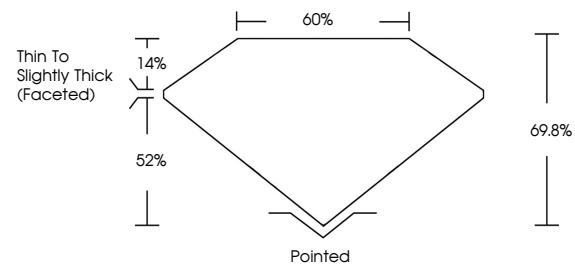
Inscription(s) **LABGROWN IGI LG538297340**

Comments: As Grown - No indication of post-growth treatment.

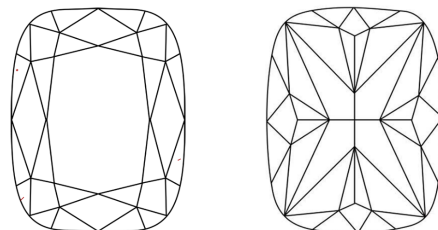
This Laboratory Grown Diamond was created by High Pressure High Temperature (HPHT) growth process. Type II

LG538297340

PROPORTIONS



CLARITY CHARACTERISTICS

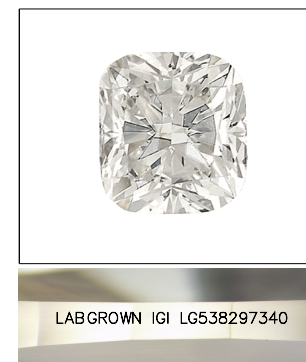


KEY TO SYMBOLS

Red symbols indicate internal characteristics.
 Green symbols indicate external characteristics.

GRADING SCALES

| | | | | | | |
|-----------------------------|------------------------------|-----------------------------|------------------------|-------------------|-----------|---|
| COLOR GRADING SCALE | CL | NC | FT | VLT | LT | |
| | COLORLESS D-F | NEAR COLORLESS G-J | FAINT K-M | VERY LIGHT N-R | LIGHT S-Z | |
| CLARITY (10x) GRADING SCALE | FL | IF | VVS | VS | SI | I |
| | FLAWLESS INTERNALLY FLAWLESS | VERY VERY SLIGHTLY INCLUDED | VERY SLIGHTLY INCLUDED | SLIGHTLY INCLUDED | INCLUDED | |

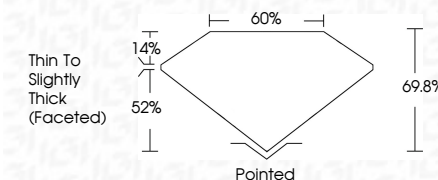


LABGROWN IGI LG538297340

LASERSCRIBESM

Sample Image Used

July 29, 2022
 IGI Report Number **LG538297340**
 Description **LABORATORY GROWN
DIAMOND**
 Shape and Cutting Style **CUSHION BRILLIANT**
 Measurements **7.08 X 5.96 X 4.16 MM**
GRADING RESULTS
 Carat Weight **1.31 CARAT**
 Color Grade **D**
 Clarity Grade **VVS 2**



ADDITIONAL GRADING INFORMATION

Polish **EXCELLENT**
 Symmetry **EXCELLENT**
 Fluorescence **NONE**
 Inscription(s) **LABGROWN IGI LG538297340**

Comments: As Grown - No indication of post-growth treatment.
 This Laboratory Grown Diamond was created by High Pressure High Temperature (HPHT) growth process. Type II



IGI

| | | | |
|-------------------|---------------------------|------------|----------------------------------|
| July 29, 2022 | IGI Report No LG538297340 | 1.31 CARAT | D |
| CUSHION BRILLIANT | 7.08 X 5.96 X 4.16 MM | VVS 2 | 69.8% |
| Carat Weight | Color Grade | 60% | Thin To Slightly Thick (Faceted) |
| Depth | Clarity Grade | Pointed | EXCELLENT |
| Table | Polish | EXCELLENT | EXCELLENT |
| Grade | Symmetry | EXCELLENT | NONE |
| | Fluorescence | NONE | LABGROWN IGI LG538297340 |
| | Inscription(s) | | Comments: |

As Grown - No indication of post-growth treatment.
 This Laboratory Grown Diamond was created by High Pressure High Temperature (HPHT) growth process. Type II