



**INTERNATIONAL
GEMOLOGICAL
INSTITUTE**

ELECTRONIC COPY

**LABORATORY GROWN
DIAMOND REPORT**

**IGI LABORATORY GROWN
DIAMOND ID REPORT**

August 26, 2022
IGI Report Number **LG538290388**

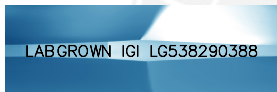
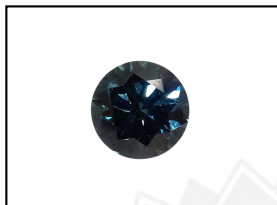
LABORATORY GROWN DIAMOND REPORT

LG538290388

ROUND BRILLIANT
5.13 - 5.16 X 3.22 MM
Carat Weight 0.53 CARAT
Color Grade FANCY VIVID BLUE
Clarity Grade VVS 2
Cut Grade EXCELLENT
Polish EXCELLENT
Symmetry EXCELLENT
Fluorescence NONE
Inscription(s) LABGROWN IGI
LG538290388

IGI LABORATORY GROWN DIAMOND IDENTIFICATION REPORT

August 26, 2022
IGI Report Number **LG538290388**
Description **LABORATORY GROWN DIAMOND**
Shape and Cutting Style **ROUND BRILLIANT**
Measurements **5.13 - 5.16 X 3.22 MM**



Comments: As Grown - No indication of post-growth treatment.
This Laboratory Grown Diamond was created by High Pressure High Temperature (HPHT) growth process.

GRADING RESULTS

Carat Weight 0.53 CARAT
Color Grade FANCY VIVID BLUE
Clarity Grade VVS 2
Cut Grade EXCELLENT

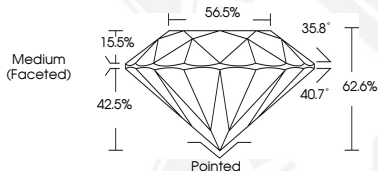
LASERSCRIBESM
Sample Images Used



ADDITIONAL GRADING INFORMATION

Polish EXCELLENT
Symmetry EXCELLENT
Fluorescence NONE
Inscription(s) LABGROWN IGI LG538290388

Comments: As Grown - No indication of post-growth treatment.
This Laboratory Grown Diamond was created by High Pressure High Temperature (HPHT) growth process.



**IGI LABORATORY GROWN
DIAMOND ID REPORT**

August 26, 2022
IGI Report Number **LG538290388**

ROUND BRILLIANT
5.13 - 5.16 X 3.22 MM

Carat Weight 0.53 CARAT
Color Grade FANCY VIVID BLUE
Clarity Grade VVS 2
Cut Grade EXCELLENT
Polish EXCELLENT
Symmetry EXCELLENT
Fluorescence NONE
Inscription(s) LABGROWN IGI
LG538290388

Comments: As Grown - No indication of post-growth treatment.
This Laboratory Grown Diamond was created by High Pressure High Temperature (HPHT) growth process.

THIS DOCUMENT WAS PRODUCED WITH THE FOLLOWING SECURITY MEASURES: SPECIAL DOCUMENT PAPER, INK SCREENS, WATERMARK, BACKGROUND DESIGN, HOLOGRAM AND OTHER SECURITY FEATURES NOT LISTED AND DO EXCEED DOCUMENT SECURITY INDUSTRY GUIDELINES.

For terms & conditions and to verify this report, please visit www.igi.org