



**INTERNATIONAL
GEMOLOGICAL
INSTITUTE**

ELECTRONIC COPY

**LABORATORY GROWN
DIAMOND REPORT**

**IGI LABORATORY GROWN
DIAMOND ID REPORT**

August 23, 2022
IGI Report Number **LG538290369**

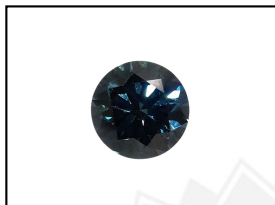
LABORATORY GROWN DIAMOND REPORT

LG538290369

ROUND BRILLIANT
5.15 - 5.17 X 3.11 MM
Carat Weight 0.51 CARAT
Color Grade FANCY VIVID BLUE
Clarity Grade VVS 1
Cut Grade EXCELLENT
Polish EXCELLENT
Symmetry EXCELLENT
Fluorescence NONE
Inscription(s) LABGROWN IGI
LG538290369

IGI LABORATORY GROWN DIAMOND IDENTIFICATION REPORT

August 23, 2022
IGI Report Number LG538290369
Description LABORATORY GROWN DIAMOND
Shape and Cutting Style ROUND BRILLIANT
Measurements 5.15 - 5.17 X 3.11 MM



LABGROWN IGI LG538290369

Comments: As Grown - No indication of post-growth treatment.
This Laboratory Grown Diamond was created by High Pressure High Temperature (HPHT) growth process.

GRADING RESULTS

Carat Weight 0.51 CARAT
Color Grade FANCY VIVID BLUE
Clarity Grade VVS 1
Cut Grade EXCELLENT

LASERSCRIBESM
Sample Images Used



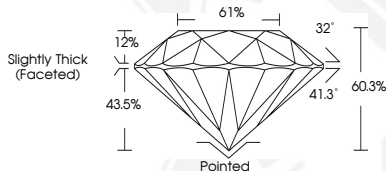
ADDITIONAL GRADING INFORMATION

Polish EXCELLENT
Symmetry EXCELLENT
Fluorescence NONE
Inscription(s) LABGROWN IGI LG538290369

**IGI LABORATORY GROWN
DIAMOND ID REPORT**

August 23, 2022
IGI Report Number **LG538290369**

Comments: As Grown - No indication of post-growth treatment.
This Laboratory Grown Diamond was created by High Pressure High Temperature (HPHT) growth process.



ROUND BRILLIANT
5.15 - 5.17 X 3.11 MM
Carat Weight 0.51 CARAT
Color Grade FANCY VIVID BLUE
Clarity Grade VVS 1
Cut Grade EXCELLENT
Polish EXCELLENT
Symmetry EXCELLENT
Fluorescence NONE
Inscription(s) LABGROWN IGI
LG538290369

Comments: As Grown - No indication of post-growth treatment.
This Laboratory Grown Diamond was created by High Pressure High Temperature (HPHT) growth process.

THIS DOCUMENT WAS PRODUCED WITH THE FOLLOWING SECURITY MEASURES: SPECIAL DOCUMENT PAPER, INK SCREENS, WATERMARK, BACKGROUND DESIGN, HOLOGRAM AND OTHER SECURITY FEATURES NOT LISTED AND DO EXCEED DOCUMENT SECURITY INDUSTRY GUIDELINES.

For terms & conditions and to verify this report, please visit www.igi.org