



# INTERNATIONAL GEMOLOGICAL INSTITUTE

ELECTRONIC COPY

## LABORATORY GROWN DIAMOND REPORT

LG538290326

### LABORATORY GROWN DIAMOND REPORT

#### IGI LABORATORY GROWN DIAMOND IDENTIFICATION REPORT

July 27, 2022  
IGI Report Number LG538290326  
Description LABORATORY GROWN DIAMOND  
Shape and Cutting Style ROUND BRILLIANT  
Measurements 5.22 - 5.25 X 3.30 MM

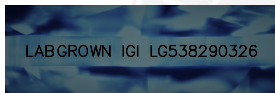
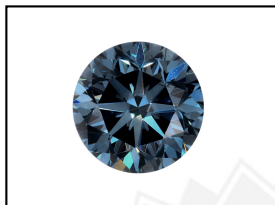
#### GRADING RESULTS

Carat Weight 0.56 CARAT  
Color Grade FANCY DEEP BLUE  
Clarity Grade SI 1  
Cut Grade EXCELLENT

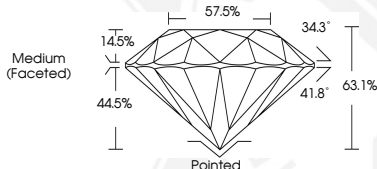
#### ADDITIONAL GRADING INFORMATION

Polish EXCELLENT  
Symmetry EXCELLENT  
Fluorescence NONE  
Inscription(s) LABGROWN IGI LG538290326

Comments: As Grown - No indication of post-growth treatment.  
This Laboratory Grown Diamond was created by High Pressure High Temperature (HPHT) growth process.



**LASERSCRIBE** SM  
Sample Images Used



#### IGI LABORATORY GROWN DIAMOND ID REPORT

July 27, 2022  
IGI Report Number LG538290326  
**ROUND BRILLIANT**  
**5.22 - 5.25 X 3.30 MM**  
Carat Weight 0.56 CARAT  
Color Grade FANCY DEEP BLUE  
Clarity Grade SI 1  
Cut Grade EXCELLENT  
Polish EXCELLENT  
Symmetry EXCELLENT  
Fluorescence NONE  
Inscription(s) LABGROWN IGI LG538290326

Comments: As Grown - No indication of post-growth treatment.  
This Laboratory Grown Diamond was created by High Pressure High Temperature (HPHT) growth process.

#### IGI LABORATORY GROWN DIAMOND ID REPORT

July 27, 2022  
IGI Report Number LG538290326  
**ROUND BRILLIANT**  
**5.22 - 5.25 X 3.30 MM**  
Carat Weight 0.56 CARAT  
Color Grade FANCY DEEP BLUE  
Clarity Grade SI 1  
Cut Grade EXCELLENT  
Polish EXCELLENT  
Symmetry EXCELLENT  
Fluorescence NONE  
Inscription(s) LABGROWN IGI LG538290326

Comments: As Grown - No indication of post-growth treatment.  
This Laboratory Grown Diamond was created by High Pressure High Temperature (HPHT) growth process.



THIS DOCUMENT WAS PRODUCED WITH THE FOLLOWING SECURITY MEASURES: SPECIAL DOCUMENT PAPER, INK SCREENS, WATERMARK, BACKGROUND DESIGN, HOLOGRAM AND OTHER SECURITY FEATURES NOT LISTED AND DO EXCEED DOCUMENT SECURITY INDUSTRY GUIDELINES.

For terms & conditions and to verify this report, please visit [www.igi.org](http://www.igi.org)