



LABORATORY GROWN DIAMOND REPORT

IGI LABORATORY GROWN DIAMOND IDENTIFICATION REPORT

July 27, 2022	
IGI Report Number	LG538290320
Description	LABORATORY GROWN DIAMOND
Shape and Cutting Style	ROUND BRILLIANT
Measurements	4.99 - 5.02 X 3.21 MM

GRADING RESULTS

Carat Weight	0.50 CARAT
Color Grade	FANCY VIVID BLUE
Clarity Grade	VS 2
Cut Grade	VERY GOOD

ADDITIONAL GRADING INFORMATION

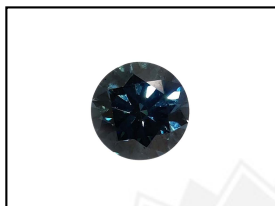
Polish	EXCELLENT
Symmetry	EXCELLENT
Fluorescence	NONE
Inscription(s)	LABGROWN IGI LG538290320

Comments: As Grown - No indication of post-growth treatment.
This Laboratory Grown Diamond was created by High Pressure High Temperature (HPHT) growth process.

ELECTRONIC COPY

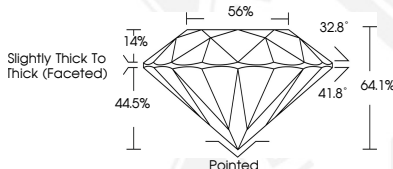
LABORATORY GROWN
DIAMOND REPORT

LG538290320



LABGROWN IGI LG538290320

LASERSCRIBE SM
Sample Images Used

**IGI LABORATORY GROWN
DIAMOND ID REPORT**

July 27, 2022
IGI Report Number **L6538290320**
ROUND BRILLIANT
4.99 - 5.02 X 3.21 MM
Carat Weight 0.50 CARAT
Color Grade FANCY VIVID BLUE
Clarity Grade VS
Cut Grade VERY GOOD
Polish EXCELLEN
Symmetry EXCELLEN
Fluorescence NONE
Inscription(s) LABGROWN IGI
L6538290320

Comments: As Grown - No indication of post-growth treatment.
This Laboratory Grown Diamond was created by High Pressure High Temperature (HPHT) growth process.

**IGI LABORATORY GROWN
DIAMOND ID REPORT**

July 27, 2022

IGI Report Number **LG58290320**

ROUND BRILLIANT

4.99 - 5.02 X 3.21 MM

Carat Weight	0.50 CARAT
Color Grade	FANCY VIVID BLUE
Clarity Grade	VS2
Cut Grade	VERY GOOD
Polish	EXCELLENT
Symmetry	EXCELLENT
Fluorescence	NON
Inscription(s)	LABGROWN IGI LG58290320

Comments: As Grown - No indication of post-growth treatment.
This Laboratory Grown Diamond was created by High Pressure High Temperature (HPHT) growth process.



THIS DOCUMENT WAS PRODUCED WITH THE FOLLOWING SECURITY MEASURES: SPECIAL DOCUMENT PAPER, INK SCREENS, WATERMARK BACKGROUND DESIGNS, HOLOGRAM AND OTHER SECURITY FEATURES NOT LISTED AND DO EXCEED DOCUMENT SECURITY INDUSTRY GUIDELINES

For terms & conditions and to verify this report, please visit www.igi.org