



**ELECTRONIC COPY**

## LABORATORY GROWN DIAMOND REPORT

August 10, 2022	
IGI Report Number	LG538290254
Description	LABORATORY GROWN DIAMOND
Shape and Cutting Style	PRINCESS CUT
Measurements	7.15 X 7.00 X 5.09 MM

## GRADING RESULTS

Carat Weight	2.21 CARATS
Color Grade	G
Clarity Grade	VS 1

### ADDITIONAL GRADING INFORMATION

Polish	EXCELLENT
Symmetry	EXCELLENT
Fluorescence	NONE

Inscription(s) **LABGROWN IGI LG538290254**  
 Comments: This Laboratory Grown Diamond was created by Chemical Vapor Deposition (CVD) growth process and may include post-growth treatment. Type IIa

LG538290254

**PROPORTIONS**

Medium

11%

71%

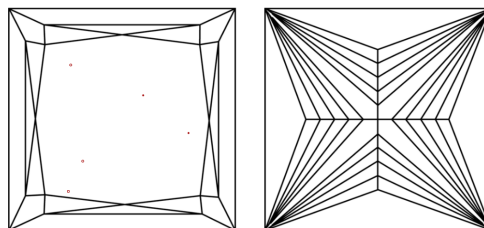
59.5%

72.7%

Pointed

The diagram shows a diamond-shaped garment pattern. The top width is labeled 71%. The left side has a vertical line with a tick mark at the top labeled 11%, and a vertical line with a tick mark at the bottom labeled 59.5%. The right side has a vertical line with a tick mark at the top labeled 72.7%. The bottom point is labeled Pointed.

## CLARITY CHARACTERISTICS

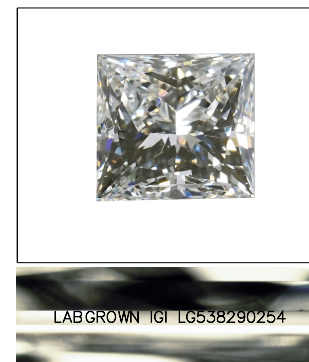


### KEY TO SYMBOLS

Red symbols indicate internal characteristics.  
Green symbols indicate external characteristics.

## GRADING SCALES

COLOR GRADING SCALE	CL		NC		FT		VLT		LT	
	COLORLESS D-F		NEAR COLORLESS G-J		FAINT K-M		VERY LIGHT N-R		LIGHT S-Z	
CLARITY (10x) GRADING SCALE	FL	IF	VVS		VS		SI		I	
	FLAWLESS INTERNALLY FLAWLESS		VERY VERY SLIGHTLY INCLUDED		VERY SLIGHTLY INCLUDED		SLIGHTLY INCLUDED		INCLUDED	

LASERSCRIBE<sup>SM</sup>

Sample Image Used



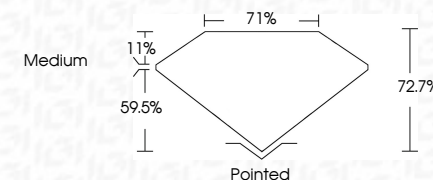
© IGI 2020, International Gemological Institute

FD - 10 20

**www.igi.org**

## LABORATORY GROWN DIAMOND REPORT

August 10, 2022	
IGI Report Number	LG538290254
Description	LABORATORY GROWN DIAMOND
Shape and Cutting Style	PRINCESS CUT
Measurements	7.15 X 7.00 X 5.09 MM
<b>GRADING RESULTS</b>	
Carat Weight	2.21 CARATS
Color Grade	G
Clarity Grade	VS 1



### ADDITIONAL GRADING INFORMATION

Polish	EXCELLENT
Symmetry	EXCELLENT
Fluorescence	NONE
Inscription(s)	LABGROWN IGI LG538290254

Comments: This Laboratory Grown Diamond was created by Chemical Vapor Deposition (CVD) growth process and may include post-growth treatment.  
Type IIa



August 10, 2022	GR Report No. LG58920254
PRINCIPAL CUT	
1.15 X 7.00 X 5.09 MM	
Carat Weight	2.21 CARATS
Color Grade	G
Clarity Grade	VS 1
Depth	72.7%
Table	71%
Girdle	Medium
Culet	Pointed
Polish	EXCELLENT
Symmetry	EXCELLENT
Fluorescence	NONE
Inscriptions	LABGROWN TGL LG58920254
Comments:	
<p>This Laboratory Grown Diamond was created using the Verneer® Chemical Vapor Deposition (CVD) growth process and may include post-growth treatment.</p> <p>Type IIC</p>	