



**INTERNATIONAL  
GEMOLOGICAL  
INSTITUTE**

**ELECTRONIC COPY**

**LABORATORY GROWN  
DIAMOND REPORT**

**IGI LABORATORY GROWN  
DIAMOND ID REPORT**

July 29, 2022  
IGI Report Number **LG538286902**  
**PEAR BRILLIANT**  
**6.20 X 4.03 X 2.54 MM**  
Carat Weight 0.40 CARAT  
Color Grade G  
Clarity Grade VS 1  
Polish EXCELLENT  
Symmetry EXCELLENT  
Fluorescence NONE  
Inscription(s) LABGROWN IGI  
LG538286902

Comments: This Laboratory Grown Diamond was created by Chemical Vapor Deposition (CVD) growth process and may include post-growth treatment.  
Type IIa

**LABORATORY GROWN DIAMOND REPORT**

**IGI LABORATORY GROWN DIAMOND IDENTIFICATION REPORT**

July 29, 2022  
IGI Report Number LG538286902  
Description LABORATORY GROWN DIAMOND  
Shape and Cutting Style PEAR BRILLIANT  
Measurements 6.20 X 4.03 X 2.54 MM

**GRADING RESULTS**

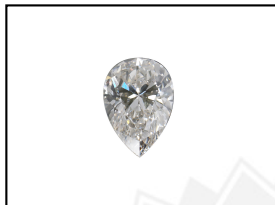
Carat Weight 0.40 CARAT  
Color Grade G  
Clarity Grade VS 1

**ADDITIONAL GRADING INFORMATION**

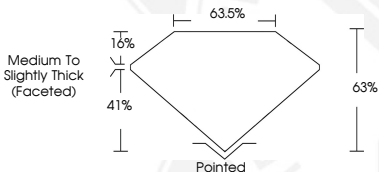
Polish EXCELLENT  
Symmetry EXCELLENT  
Fluorescence NONE  
Inscription(s) LABGROWN IGI LG538286902

Comments: This Laboratory Grown Diamond was created by Chemical Vapor Deposition (CVD) growth process and may include post-growth treatment.  
Type IIa

**LG538286902**



**LASERSCRIBE<sup>SM</sup>**  
Sample Images Used



THIS DOCUMENT WAS PRODUCED WITH THE FOLLOWING SECURITY MEASURES: SPECIAL DOCUMENT PAPER, INK SCREENS, WATERMARK, BACKGROUND DESIGN, HOLOGRAM AND OTHER SECURITY FEATURES NOT LISTED AND DO EXCEED DOCUMENT SECURITY INDUSTRY GUIDELINES.

For terms & conditions and to verify this report, please visit [www.igi.org](http://www.igi.org)

**IGI LABORATORY GROWN  
DIAMOND ID REPORT**

July 29, 2022  
IGI Report Number **LG538286902**  
**PEAR BRILLIANT**  
**6.20 X 4.03 X 2.54 MM**  
Carat Weight 0.40 CARAT  
Color Grade G  
Clarity Grade VS 1  
Polish EXCELLENT  
Symmetry EXCELLENT  
Fluorescence NONE  
Inscription(s) LABGROWN IGI  
LG538286902

Comments: This Laboratory Grown Diamond was created by Chemical Vapor Deposition (CVD) growth process and may include post-growth treatment.  
Type IIa