



# INTERNATIONAL GEMOLOGICAL INSTITUTE

ELECTRONIC COPY

## LABORATORY GROWN DIAMOND REPORT

LG538282662

### LABORATORY GROWN DIAMOND REPORT

#### IGI LABORATORY GROWN DIAMOND IDENTIFICATION REPORT

November 17, 2022

IGI Report Number

LG538282662

Description

LABORATORY GROWN DIAMOND

Shape and Cutting Style

ROUND BRILLIANT

Measurements

5.54 - 5.57 X 3.63 MM

#### GRADING RESULTS

Carat Weight

0.71 CARAT

Color Grade

FANCY INTENSE PINK

Clarity Grade

SI 2

Cut Grade

VERY GOOD

#### ADDITIONAL GRADING INFORMATION

Polish

EXCELLENT

Symmetry

EXCELLENT

Fluorescence

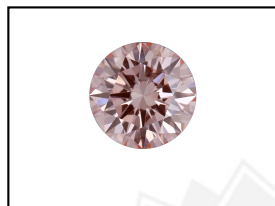
SLIGHT

Inscription(s)

LABGROWN (IGI) LG538282662

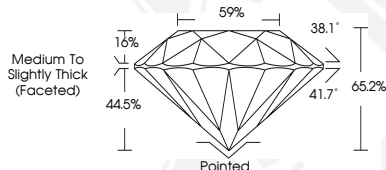
Comments: This Laboratory Grown Diamond was created by Chemical Vapor Deposition (CVD) growth process.

Indications of post-growth treatment.



LABGROWN (IGI) LG538282662

**LASERSCRIBE** <sup>SM</sup>  
Sample Images Used



#### IGI LABORATORY GROWN DIAMOND ID REPORT

November 17, 2022

IGI Report Number LG538282662

#### ROUND BRILLIANT

5.54 - 5.57 X 3.63 MM

Carat Weight 0.71 CARAT

Color Grade FANCY INTENSE PINK

Clarity Grade SI 2

Cut Grade VERY GOOD

Polish EXCELLENT

Symmetry EXCELLENT

Fluorescence SLIGHT

Inscription(s) LABGROWN (IGI) LG538282662

Comments: This Laboratory Grown Diamond was created by Chemical Vapor Deposition (CVD) growth process. Indications of post-growth treatment.

#### IGI LABORATORY GROWN DIAMOND ID REPORT

November 17, 2022

IGI Report Number LG538282662

#### ROUND BRILLIANT

5.54 - 5.57 X 3.63 MM

Carat Weight 0.71 CARAT

Color Grade FANCY INTENSE PINK

Clarity Grade SI 2

Cut Grade VERY GOOD

Polish EXCELLENT

Symmetry EXCELLENT

Fluorescence SLIGHT

Inscription(s) LABGROWN (IGI) LG538282662

Comments: This Laboratory Grown Diamond was created by Chemical Vapor Deposition (CVD) growth process. Indications of post-growth treatment.



THIS DOCUMENT WAS PRODUCED WITH THE FOLLOWING SECURITY MEASURES: SPECIAL DOCUMENT PAPER, INK SCREENS, WATERMARK, BACKGROUND DESIGN, HOLOGRAM AND OTHER SECURITY FEATURES NOT LISTED AND DO EXCEED DOCUMENT SECURITY INDUSTRY GUIDELINES.

For terms & conditions and to verify this report, please visit [www.igi.org](http://www.igi.org)