



ELECTRONIC COPY

LABORATORY GROWN DIAMOND REPORT

August 5, 2022	
IGI Report Number	LG538282441
Description	LABORATORY GROWN DIAMOND
Shape and Cutting Style	CUT CORNERED RECTANGULAR MODIFIED BRILLIANT
Measurements	8.53 X 6.26 X 4.26 MM

GRADING RESULTS

Carat Weight	2.02 CARATS
Color Grade	F
Clarity Grade	VS 1

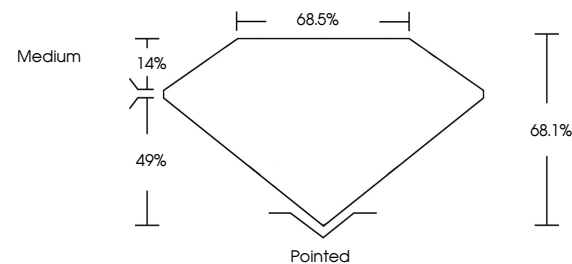
ADDITIONAL GRADING INFORMATION

Polish	EXCELLENT
Symmetry	EXCELLENT
Fluorescence	NONE

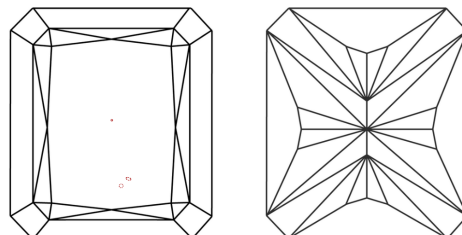
Inscription(s) **LABGROWN IGI LG538282441**
 Comments: This Laboratory Grown Diamond was created by Chemical Vapor Deposition (CVD) growth process and may include post-growth treatment. Type IIa

LG538282441

PROPORTIONS



CLARITY CHARACTERISTICS

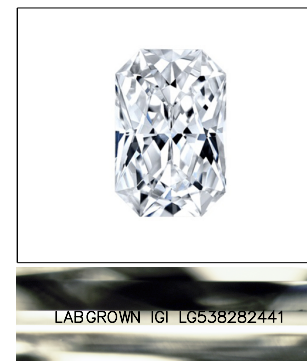


KEY TO SYMBOLS

Red symbols indicate internal characteristics.
Green symbols indicate external characteristics.

GRADING SCALES

COLOR GRADING SCALE	CL		NC		FT		VLT		LT	
	COLORLESS D-F		NEAR COLORLESS G-J		FAINT K-M		VERY LIGHT N-R		LIGHT S-Z	
CLARITY (10x) GRADING SCALE	FL	IF	VVS		VS		SI		I	
	FLAWLESS INTERNALLY FLAWLESS		VERY VERY SLIGHTLY INCLUDED		VERY SLIGHTLY INCLUDED		SLIGHTLY INCLUDED		INCLUDED	

LASERSCRIBESM

Sample Image Used



© IGI 2020, International Gemological Institute

FD - 10 20

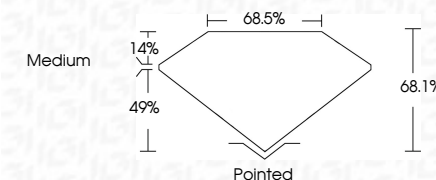
www.igi.org

LABORATORY GROWN DIAMOND REPORT

August 5, 2022	
IGI Report Number	LG538282441
Description	LABORATORY GROWN DIAMOND
Shape and Cutting Style	CUT CORNERED RECTANGULAR MODIFIED BRILLIANT
Measurements	8.53 X 6.26 X 4.26 MM

GRADING RESULTS

Carat Weight	2.02 CARATS
Color Grade	F
Clarity Grade	VS 1



ADDITIONAL GRADING INFORMATION

Polish	EXCELLENT
Symmetry	EXCELLENT
Fluorescence	NONE
Inscription(s)	LABGROWN IGI LG538282441

Inscription(s) LABGROWN IGI LG538282441

Comments: This Laboratory Grown Diamond was created by Chemical Vapor Deposition (CVD) growth process and may include post-growth treatment.
Type IIa



August 5, 2022	GI REPORT NO. LGS928241	20Z CARBONS	V5.1	Pointed
GI COVERED BEC. MODIFIED			64.1%	EXCELLENT
3.53 X 3.53 X 4.26 MM			68.6%	EXCELLENT
			Medium	NONE
				LARGROWN (cl LGS028241)
				Comments:
				The Laboratory Growth Vapor Deposition created by Chemical Vapor Deposition (CVD) growth process and may include post-growth treatment.
				Type IId

This Laboratory Grown Diamond was created by Chemical Vapor Deposition (CVD) growth process and may include post-growth treatment.