



ELECTRONIC COPY

LABORATORY GROWN DIAMOND REPORT

August 4, 2022
 IGI Report Number **LG538281075**
 Description **LABORATORY GROWN
DIAMOND**
 Shape and Cutting Style **PRINCESS CUT**
 Measurements **7.83 X 7.81 X 5.59 MM**

GRADING RESULTS

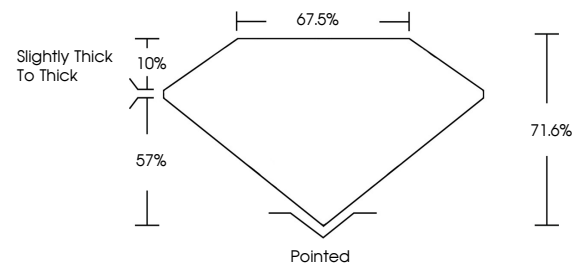
Carat Weight **3.03 CARATS**
 Color Grade **H**
 Clarity Grade **VS 1**

ADDITIONAL GRADING INFORMATION

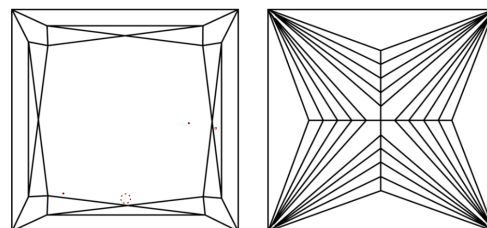
Polish **EXCELLENT**
 Symmetry **EXCELLENT**
 Fluorescence **NONE**
 Inscription(s) **LABGROWN IGI LG538281075**
 Comments: This Laboratory Grown Diamond was created by Chemical Vapor Deposition (CVD) growth process and may include post-growth treatment. Type IIa

LG538281075

PROPORTIONS



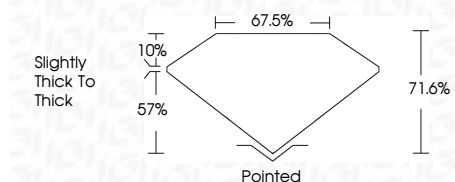
CLARITY CHARACTERISTICS



KEY TO SYMBOLS

Red symbols indicate internal characteristics.
 Green symbols indicate external characteristics.

August 4, 2022
 IGI Report Number **LG538281075**
 Description **LABORATORY GROWN
DIAMOND**
 Shape and Cutting Style **PRINCESS CUT**
 Measurements **7.83 X 7.81 X 5.59 MM**
GRADING RESULTS
 Carat Weight **3.03 CARATS**
 Color Grade **H**
 Clarity Grade **VS 1**

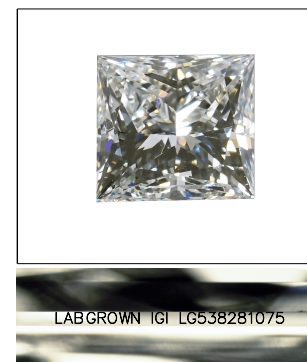


ADDITIONAL GRADING INFORMATION

Polish **EXCELLENT**
 Symmetry **EXCELLENT**
 Fluorescence **NONE**
 Inscription(s) **LABGROWN IGI LG538281075**
 Comments: This Laboratory Grown Diamond was created by Chemical Vapor Deposition (CVD) growth process and may include post-growth treatment. Type IIa

GRADING SCALES

COLOR GRADING SCALE	CL	NC	FT	VLT	LT	
	COLORLESS D-F	NEAR COLORLESS G-J	FAINT K-M	VERY LIGHT N-R	LIGHT S-Z	
CLARITY (10x) GRADING SCALE	FL	IF	VVS	VS	SI	I
	FLAWLESS INTERNALLY FLAWLESS	VERY VERY SLIGHTLY INCLUDED	VERY SLIGHTLY INCLUDED	SLIGHTLY INCLUDED		INCLUDED



LASERSCRIBESM

Sample Image Used



August 4, 2022	IGI Report No LG538281075	3.03 CARATS	H	Pointed	Polish	EXCELLENT
PRINCESS CUT	7.83 X 7.81 X 5.59 MM	VS 1	71.6%	EXCELLENT	Symmetry	EXCELLENT
Carat Weight		67.5%		NONE	Fluorescence	NONE
Color Grade				LABGROWN IGI	Inscription(s)	LG538281075
Clarity Grade					Comments:	
Depth						
Table						
Grade						

The Laboratory Grown Diamond was created by Chemical Vapor Deposition (CVD) growth process and may include post-growth treatment. Type IIa