



ELECTRONIC COPY

LABORATORY GROWN DIAMOND REPORT

Description	LABORATORY GROWN DIAMOND
Shape and Cutting Style	PRINCESS CUT
Measurements	8.24 X 7.98 X 5.14 MM

GRADING RESULTS

Carat Weight	3.01 CARATS
Color Grade	G
Clarity Grade	VS 1

ADDITIONAL GRADING INFORMATION

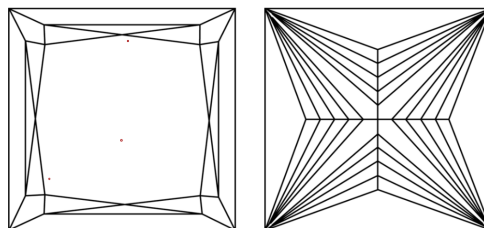
Polish	EXCELLENT
Symmetry	EXCELLENT
Fluorescence	NONE

Inscription(s) **LABGROWN IGI LG538281052**
 Comments: This Laboratory Grown Diamond was created by Chemical Vapor Deposition (CVD) growth process and may include post-growth treatment. Type IIa

Diagram illustrating the proportions of a diamond-shaped cross-section (likely a stylized letter 'A' or a similar geometric shape). The diagram shows the following proportions:

- Top horizontal segment: 71%
- Left vertical segment: 8.5%
- Right vertical segment: 64.4%
- Bottom vertical segment: 52%
- Labels: "Pointed" at the bottom, "Thinly Thick" on the left.

CLARITY CHARACTERISTICS

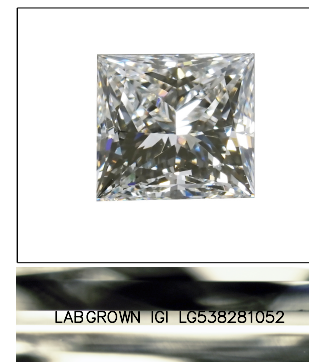


KEY TO SYMBOLS

Red symbols indicate internal characteristics.
Green symbols indicate external characteristics.

GRADING SCALES

COLOR GRADING SCALE	CL		NC		FT		VLT		LT	
	COLORLESS D-F		NEAR COLORLESS G-J		FAINT K-M		VERY LIGHT N-R		LIGHT S-Z	
CLARITY (10x) GRADING SCALE	FL	IF	VVS		VS		SI		I	
	FLAWLESS INTERNALLY FLAWLESS		VERY VERY SLIGHTLY INCLUDED		VERY SLIGHTLY INCLUDED		SLIGHTLY INCLUDED		INCLUDED	

LASERSCRIBESM

Sample Image Used

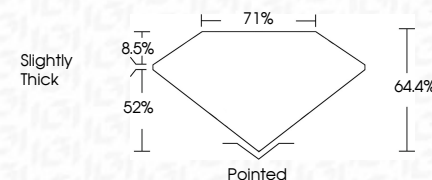


© IGI 2020, International Gemological Institute

FD - 10 20

LABORATORY GROWN DIAMOND REPORT

August 4, 2022	
IGI Report Number	LG538281052
Description	LABORATORY GROWN DIAMOND
Shape and Cutting Style	PRINCESS CUT
Measurements	8.24 X 7.98 X 5.14 MM
GRADING RESULTS	
Carat Weight	3.01 CARATS
Color Grade	G
Clarity Grade	VS 1



ADDITIONAL GRADING INFORMATION

Polish	EXCELLENT
Symmetry	EXCELLENT
Fluorescence	NONE
Inscription(s)	LABGROWN IGI LG538281052

Comments: This Laboratory Grown Diamond was created by Chemical Vapor Deposition (CVD) growth process and may include post-growth treatment. Type IIa



August 4, 2022	Report No. LG58281052	3.01 CARATS	Ported
GI Process CUF		VS 1	EXCELLENT
24 X 14 X 7.95 X 5.14 MM		71%	EXCEL
			SLIGHTLY THICK
Carat Weight	Color Grade	Clarity Grade	Polish
		Depth	Symmetry
		Table	Fluorescence
		Girdle	Inscriptions(s)
			Comments:
			<p>This Laboratory Grown Diamond was created by Chemical Vapor Deposition (CVD) growth process and may include post-growth treatment.</p> <p>Type IIA</p>