



ELECTRONIC COPY

LABORATORY GROWN DIAMOND REPORT

September 23, 2022
IGI Report Number LG538278874
Description LABORATORY GROWN DIAMOND
Shape and Cutting Style ROUND BRILLIANT
Measurements 8.27 - 8.30 X 4.83 MM

GRADING RESULTS

Carat Weight 2.02 CARATS
Color Grade FANCY INTENSE PINK
Clarity Grade VS 1
Cut Grade EXCELLENT

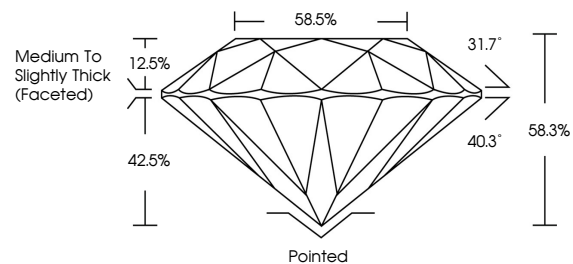
ADDITIONAL GRADING INFORMATION

Polish EXCELLENT
Symmetry EXCELLENT
Fluorescence SLIGHT
Inscription(s) LABGROWN IGI LG538278874

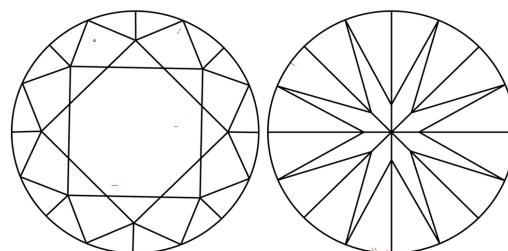
Comments: This Laboratory Grown Diamond was created by Chemical Vapor Deposition (CVD) growth process.
Indications of post-growth treatment.

LG538278874

PROPORTIONS



CLARITY CHARACTERISTICS



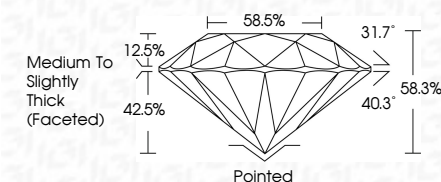
KEY TO SYMBOLS

Red symbols indicate internal characteristics.
Green symbols indicate external characteristics.

GRADING SCALES

Table showing color grading scales (CL, NC, FT, VLT, LT) and clarity (10x) grading scales (FL, IF, VVS, VS, SI, I) with their corresponding descriptions.

September 23, 2022
IGI Report Number LG538278874
Description LABORATORY GROWN DIAMOND
Shape and Cutting Style ROUND BRILLIANT
Measurements 8.27 - 8.30 X 4.83 MM
GRADING RESULTS
Carat Weight 2.02 CARATS
Color Grade FANCY INTENSE PINK
Clarity Grade VS 1
Cut Grade EXCELLENT



ADDITIONAL GRADING INFORMATION

Polish EXCELLENT
Symmetry EXCELLENT
Fluorescence SLIGHT
Inscription(s) LABGROWN IGI LG538278874

Comments: This Laboratory Grown Diamond was created by Chemical Vapor Deposition (CVD) growth process.
Indications of post-growth treatment.



LASERSCRIBE SM
Sample Image Used



September 23, 2022
IGI Report No LG538278874
ROUND BRILLIANT
8.27 - 8.30 X 4.83 MM
Carat Weight 2.02 CARATS
Color Grade FANCY INTENSE PINK
Clarity Grade VS 1
Cut Grade EXCELLENT
Depth 58.5%
Table 58.5%
Girdle Medium To Slightly Thick (Faceted)
Culet Pointed
Polish EXCELLENT
Symmetry EXCELLENT
Fluorescence SLIGHT
Inscription(s) LABGROWN IGI LG538278874
Comments: This Laboratory Grown Diamond was created by Chemical Vapor Deposition (CVD) growth process.
Indications of post-growth treatment.