



**ELECTRONIC COPY**

## LABORATORY GROWN DIAMOND REPORT

July 30, 2022

IGI Report Number **LG538278867**

Description	LABORATORY GROWN DIAMOND
-------------	-----------------------------

Shape and Cutting Style **PRINCESS CUT**

Measurements 6.92 X 6.75 X 4.80 MM

## GRADING RESULTS

Carat Weight 2.03 CARATS

Color Grade **FANCY VIVID PINK**

Clarity Grade	SI 1
---------------	------

### ADDITIONAL GRADING INFORMATION

Polish **EXCELLENT**

Symmetry **EXCELLENT**

Fluorescence SLIGHT

Inscription(s) LABGROWN IGI LG538278867

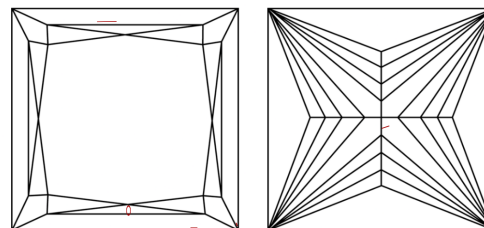
Comments: This Laboratory Grown Diamond was created by Chemical Vapor Deposition (CVD) growth process.

Indications of post-growth treatment.

Technical drawing of a diamond-shaped tile (LG538278867) showing proportions. The tile is a rhombus with a pointed bottom edge. The proportions are indicated by dimension lines and percentages:

- Top width: 71%
- Left side height: 11%
- Left side width: 56%
- Right side height: 71.1%
- Bottom edge: Pointed

## CLARITY CHARACTERISTICS

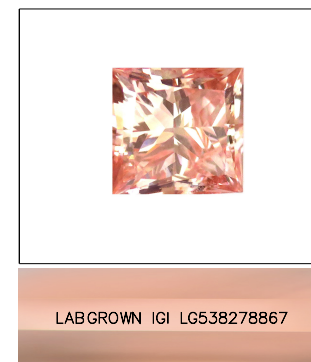


## KEY TO SYMBOLS

Red symbols indicate internal characteristics.  
Green symbols indicate external characteristics.

## GRADING SCALES

COLOR GRADING SCALE	CL		NC	FT	VL	LT
	COLORLESS D-F		NEAR COLORLESS G-J	FAINT K-M	VERY LIGHT N-R	LIGHT S-Z
CLARITY (10x) GRADING SCALE	FL	IF	VVS	VS	SI	I
	FLAWLESS INTERNALLY FLAWLESS		VERY VERY SLIGHTLY INCLUDED	VERY SLIGHTLY INCLUDED	SLIGHTLY INCLUDED	INCLUDED

**LASERSCRIBE<sup>SM</sup>**

Sample Image Used



© IGI 2020, International Gemological Institute

FD - 10 20

LABORATORY GROWN DIAMOND REPORT

July 30, 2022	
IGI Report Number	LG538278867
Description	LABORATORY GROWN

Shape and Cutting Style **PRINCESS CUT**

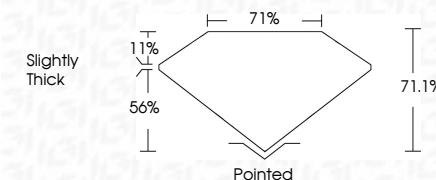
Measurements 6.92 X 6.75 X 4.80 MM

## GRADING RESULTS

Carat Weight **2.03 CARATS**

Color Grade **FANCY VIVID PINK**

Clarity Grade SI 1



### ADDITIONAL GRADING INFORMATION

Polish **EXCELLENT**

Symmetry **EXCELLENT**

Fluorescence SLIGHTLY

Inscription(s) LABGROWN IGI LG538278867

Comments: This Laboratory Grown Diamond was created by Chemical Vapor Deposition (CVD) growth process.  
Indications of post-growth treatment.

[illegible]