



ELECTRONIC COPY

LABORATORY GROWN DIAMOND REPORT

July 28, 2022	
IGI Report Number	LG538278458
Description	LABORATORY GROWN DIAMOND
Shape and Cutting Style	CUT CORNERED RECTANGULAR MODIFIED BRILLIANT
Measurements	8.03 X 5.96 X 4.09 MM

GRADING RESULTS

Carat Weight	1.70 CARAT
Color Grade	G
Clarity Grade	VS 1

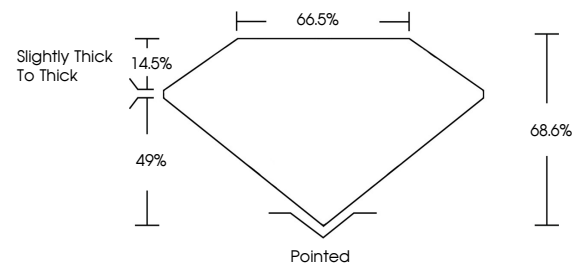
ADDITIONAL GRADING INFORMATION

Polish	EXCELLENT
Symmetry	EXCELLENT
Fluorescence	NONE
Inscription(s)	LABGROWN IGI LG538278458

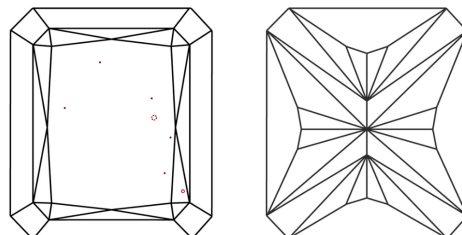
Comments: This Laboratory Grown Diamond was created by Chemical Vapor Deposition (CVD) growth process and may include post-growth treatment.
Type IIa

LG538278458

PROPORTIONS



CLARITY CHARACTERISTICS

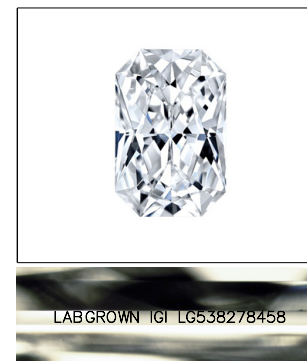


KEY TO SYMBOLS

Red symbols indicate internal characteristics.
Green symbols indicate external characteristics.

GRADING SCALES

COLOR GRADING SCALE	CL		NC	FT	VLT	LT
	COLORLESS D-F		NEAR COLORLESS G-J	FAINT K-M	VERY LIGHT N-R	LIGHT S-Z
CLARITY (10x) GRADING SCALE	FL	IF	VVS	VS	SI	I
	FLAWLESS INTERNALLY FLAWLESS		VERY VERY SLIGHTLY INCLUDED	VERY SLIGHTLY INCLUDED	SLIGHTLY INCLUDED	INCLUDED

LASERSCRIBESM

Sample Image Used



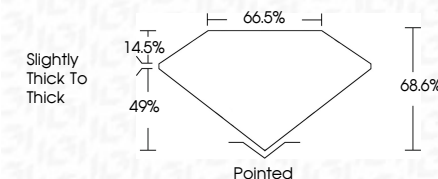
© IGI 2020, International Gemological Institute

FD - 10 20

www.igi.org

LABORATORY GROWN DIAMOND REPORT

July 28, 2022	
IGI Report Number	LG538278458
Description	LABORATORY GROWN DIAMOND
Shape and Cutting Style	CUT CORNERED RECTANGULAR MODIFIED BRILLIANT
Measurements	8.03 X 5.96 X 4.09 MM
GRADING RESULTS	
Carat Weight	1.70 CARAT
Color Grade	G
Clarity Grade	VS 1



ADDITIONAL GRADING INFORMATION

Polish	EXCELLENT
Symmetry	EXCELLENT
Fluorescence	NONE
Inscription(s)	LABGROWN IGI LG538278458

Comments: This Laboratory Grown Diamond was created by Chemical Vapor Deposition (CVD) growth process and may include post-growth treatment.
Type IIa



July 28, 2022	GI Report No. LG53827468	1.70 CARAT	Pointed
CUT CORNERED BEC. MODIFIED	Color Grade	G	EXCELLENT
10.3 X 5.5 X 4.09 MM	Clarity Grade	VS 1	EXCELLENT
	Depth	68.6%	NONE
	Table	66.5%	LAB-GROWN (G)
	Grade	Slightly Thick to Thick	LG53827468
	Culet		Comments:
	Polish	Symmetry	This Laboratory Grown Diamond was
	Fluorescence	Fluorescence	by the Laboratory of Gemmology
	Inscriptions(s)		and is a natural colorless octahedron
			(CVD) growth process and may include
			post-growth treatment.
			Type IIA