



**INTERNATIONAL
GEMOLOGICAL
INSTITUTE**

ELECTRONIC COPY

**LABORATORY GROWN
DIAMOND REPORT**

**IGI LABORATORY GROWN
DIAMOND ID REPORT**

July 28, 2022
IGI Report Number **LG538275623**
PEAR BRILLIANT
7.21 X 4.40 X 2.75 MM
Carat Weight 0.50 CARAT
Color Grade G
Clarity Grade VVS 2
Polish VERY GOOD
Symmetry EXCELLENT
Fluorescence NONE
Inscription(s) LABGROWN IGI
LG538275623

Comments: This Laboratory Grown Diamond was created by Chemical Vapor Deposition (CVD) growth process and may include post-growth treatment. Type IIa

LABORATORY GROWN DIAMOND REPORT

IGI LABORATORY GROWN DIAMOND IDENTIFICATION REPORT

July 28, 2022
IGI Report Number LG538275623
Description LABORATORY GROWN DIAMOND
Shape and Cutting Style PEAR BRILLIANT
Measurements 7.21 X 4.40 X 2.75 MM

GRADING RESULTS

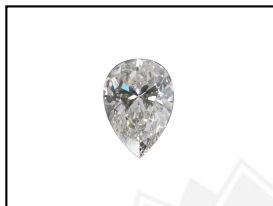
Carat Weight 0.50 CARAT
Color Grade G
Clarity Grade VVS 2

ADDITIONAL GRADING INFORMATION

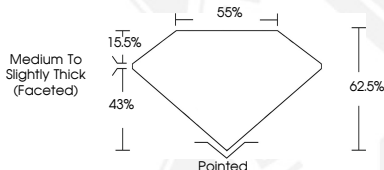
Polish VERY GOOD
Symmetry EXCELLENT
Fluorescence NONE
Inscription(s) LABGROWN IGI LG538275623

Comments: This Laboratory Grown Diamond was created by Chemical Vapor Deposition (CVD) growth process and may include post-growth treatment. Type IIa

LG538275623



LASERSCRIBESM
Sample Images Used



THIS DOCUMENT WAS PRODUCED WITH THE FOLLOWING SECURITY MEASURES: SPECIAL DOCUMENT PAPER, INK SCREENS, WATERMARK, BACKGROUND DESIGN, HOLOGRAM AND OTHER SECURITY FEATURES NOT LISTED AND DO EXCEED DOCUMENT SECURITY INDUSTRY GUIDELINES.

For terms & conditions and to verify this report, please visit www.igi.org

**IGI LABORATORY GROWN
DIAMOND ID REPORT**

July 28, 2022
IGI Report Number **LG538275623**
PEAR BRILLIANT
7.21 X 4.40 X 2.75 MM
Carat Weight 0.50 CARAT
Color Grade G
Clarity Grade VVS 2
Polish VERY GOOD
Symmetry EXCELLENT
Fluorescence NONE
Inscription(s) LABGROWN IGI
LG538275623

Comments: This Laboratory Grown Diamond was created by Chemical Vapor Deposition (CVD) growth process and may include post-growth treatment. Type IIa