



ELECTRONIC COPY

LABORATORY GROWN DIAMOND REPORT

August 31, 2022	
IGI Report Number	LG538269838
Description	LABORATORY GROWN DIAMOND
Shape and Cutting Style	CUT CORNERED RECTANGULAR MODIFIED BRILLIANT
Measurements	7.85 X 5.67 X 3.84 MM

GRADING RESULTS

Carat Weight	1.53 CARAT
Color Grade	H
Clarity Grade	VVS 2

ADDITIONAL GRADING INFORMATION

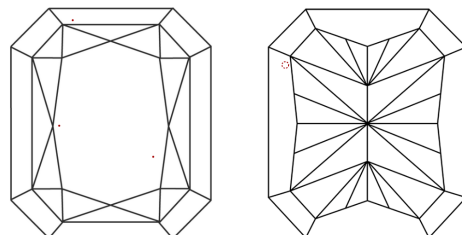
Polish	EXCELLENT
Symmetry	EXCELLENT
Fluorescence	NONE
Inscription(s)	LABGROWN IGI LG538269838

Comments: This Laboratory Grown Diamond was created by Chemical Vapor Deposition (CVD) growth process and may include post-growth treatment.
Type IIa

Diagram illustrating the proportions of a diamond-shaped rug (LG538269838) with a 'Medium' pile and 'Pointed' ends. The proportions are defined by percentages:

- Top width: 64.5%
- Left side width: 11.5%
- Bottom width: 52%
- Right side width: 67.7%

CLARITY CHARACTERISTICS

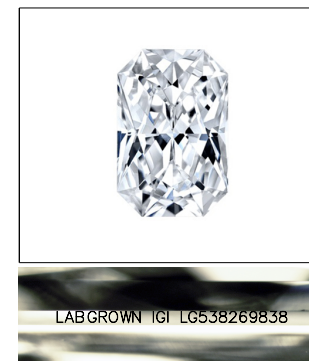


KEY TO SYMBOLS

Red symbols indicate internal characteristics.
Green symbols indicate external characteristics.

GRADING SCALES

COLOR GRADING SCALE	CL		NC		FT		VLT		LT	
	COLORLESS D-F		NEAR COLORLESS G-J		FAINT K-M		VERY LIGHT N-R		LIGHT S-Z	
CLARITY (10x) GRADING SCALE	FL	IF	VVS		VS		SI		I	
	FLAWLESS INTERNALLY		VERY VERY SLIGHTLY INCLUDED		VERY SLIGHTLY INCLUDED		SLIGHTLY INCLUDED		INCLUDED	

LASERSCRIBESM

Sample Image Used

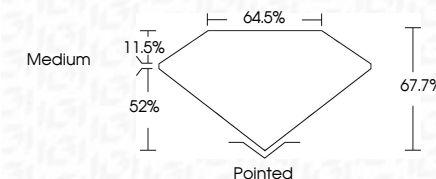


© IGI 2020, International Gemological Institute

FD - 10 20

LABORATORY GROWN DIAMOND REPORT

August 31, 2022	
IGI Report Number	LG538269838
Description	LABORATORY GROWN DIAMOND
Shape and Cutting Style	CUT CORNERED RECTANGULAR MODIFIED BRILLIANT
Measurements	7.85 X 5.67 X 3.84 MM
GRADING RESULTS	
Carat Weight	1.53 CARAT
Color Grade	H
Clarity Grade	VVS 2



ADDITIONAL GRADING INFORMATION

Polish	EXCELLENT
Symmetry	EXCELLENT
Fluorescence	NONE
Inscription(s)	LABGROWN IGI LG538269838

Inscription(s) LABGROWN IGI LG538269838

Comments: This Laboratory Grown Diamond was created by Chemical Vapor Deposition (CVD) growth process and may include post-growth treatment.
Type IIa



August 31, 2022	Lot Number	1683204938
GI Patent No.	1683204938	
STP Approved Recd. Modified		
1683 X 5.57 X 3.81 MM		
Carat Weight	1.15 CARAT	
Color Grade	H	
Clarity Grade	VVS 2	
Depth	67.7%	
Table	64.6%	
Grade	Medium	
Culet	Pointed	
Polish	EXCELLENT	
Symmetry	EXCELLENT	
Fluorescence	NONE	
Inscriptions(s)	LABGRAPHS (S)	
	1683204938	
Comments:		
<p>The Laboratory Growth Diamond was created by Chemical Vapor Deposition (CVD) growth process and may include post-growth treatment.</p>		
Type Ia		