



**ELECTRONIC COPY**

**LABORATORY GROWN DIAMOND REPORT**

July 16, 2022  
 IGI Report Number **LG538257905**  
 Description **LABORATORY GROWN  
DIAMOND**  
 Shape and Cutting Style **CUSHION BRILLIANT**  
 Measurements **7.35 X 6.52 X 4.10 MM**

**GRADING RESULTS**

Carat Weight **1.59 CARAT**  
 Color Grade **F**  
 Clarity Grade **VS 2**

**ADDITIONAL GRADING INFORMATION**

Polish **EXCELLENT**  
 Symmetry **EXCELLENT**  
 Fluorescence **NONE**

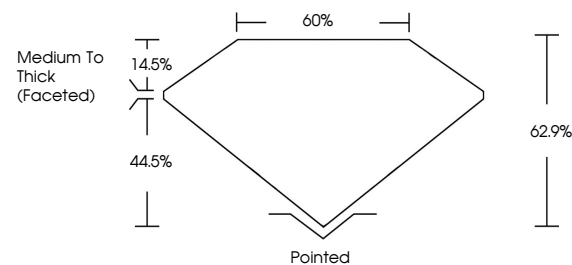
Inscription(s) **LABGROWN IGI LG538257905**

Comments: As Grown - No indication of post-growth treatment.

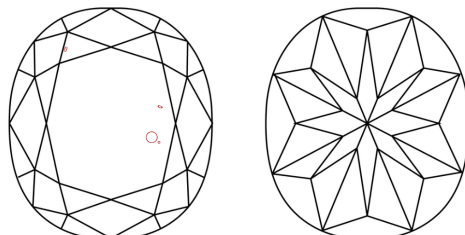
This Laboratory Grown Diamond was created by High Pressure High Temperature (HPHT) growth process. Type II

LG538257905

**PROPORTIONS**



**CLARITY CHARACTERISTICS**

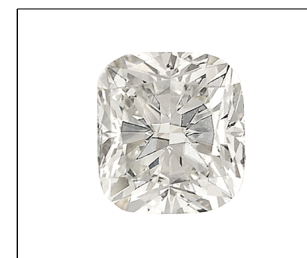


**KEY TO SYMBOLS**

Red symbols indicate internal characteristics.  
 Green symbols indicate external characteristics.

**GRADING SCALES**

COLOR GRADING SCALE	CL	NC	FT	VLT	LT	
	COLORLESS D-F	NEAR COLORLESS G-J	FAINT K-M	VERY LIGHT N-R	LIGHT S-Z	
CLARITY (10x) GRADING SCALE	FL	IF	VVS	VS	SI	I
	FLAWLESS INTERNALLY FLAWLESS	VERY VERY SLIGHTLY INCLUDED	VERY SLIGHTLY INCLUDED	SLIGHTLY INCLUDED	INCLUDED	INCLUDED

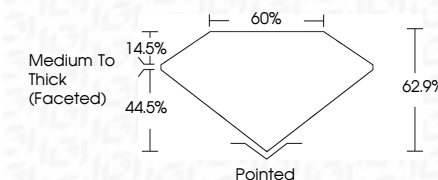


LABGROWN IGI LG538257905

LASERSCRIBE<sup>SM</sup>

Sample Image Used

July 16, 2022  
 IGI Report Number **LG538257905**  
 Description **LABORATORY GROWN  
DIAMOND**  
 Shape and Cutting Style **CUSHION BRILLIANT**  
 Measurements **7.35 X 6.52 X 4.10 MM**  
**GRADING RESULTS**  
 Carat Weight **1.59 CARAT**  
 Color Grade **F**  
 Clarity Grade **VS 2**



**ADDITIONAL GRADING INFORMATION**

Polish **EXCELLENT**  
 Symmetry **EXCELLENT**  
 Fluorescence **NONE**  
 Inscription(s) **LABGROWN IGI LG538257905**

Comments: As Grown - No indication of post-growth treatment.  
 This Laboratory Grown Diamond was created by High Pressure High Temperature (HPHT) growth process. Type II



**IGI**

July 16, 2022  
 IGI Report No **LG538257905**  
**CUSHION BRILLIANT**  
 7.35 X 6.52 X 4.10 MM  
 Carat Weight **1.59 CARAT**  
 Color Grade **F**  
 Clarity Grade **VS 2**  
 Depth **62.9%**  
 Table **60%**  
 Girdle **Medium To Thick (Faceted)**  
 Culet **Pointed**  
 Polish **EXCELLENT**  
 Symmetry **EXCELLENT**  
 Fluorescence **NONE**  
 Inscription(s) **LABGROWN IGI LG538257905**  
 Comments: **As Grown - No indication of post-growth treatment.**

**The Laboratory Grown Diamond was created by High Pressure High Temperature (HPHT) growth process. Type II**

