



**ELECTRONIC COPY**

**LABORATORY GROWN DIAMOND REPORT**

July 16, 2022  
 IGI Report Number **LG538257796**  
 Description **LABORATORY GROWN  
DIAMOND**  
 Shape and Cutting Style **CUT CORNERED RECTANGULAR  
MODIFIED BRILLIANT**  
 Measurements **8.11 X 5.93 X 4.09 MM**

**GRADING RESULTS**

Carat Weight **1.62 CARAT**  
 Color Grade **E**  
 Clarity Grade **SI 1**

**ADDITIONAL GRADING INFORMATION**

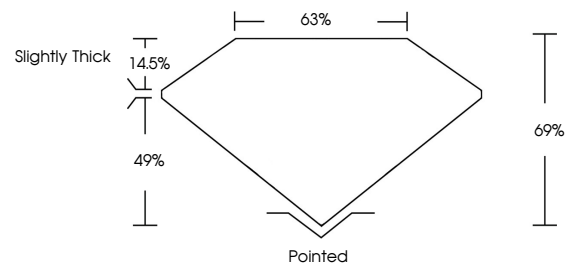
Polish **EXCELLENT**  
 Symmetry **EXCELLENT**  
 Fluorescence **NONE**

Inscription(s) **LABGROWN IGI LG538257796**

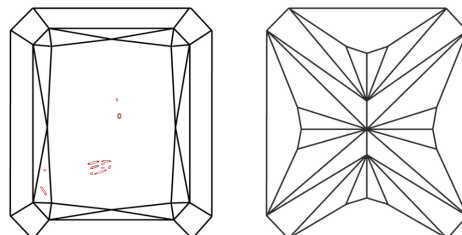
Comments: As Grown - No indication of post-growth treatment.  
 This Laboratory Grown Diamond was created by High Pressure High Temperature (HPHT) growth process. Type II

LG538257796

**PROPORTIONS**



**CLARITY CHARACTERISTICS**

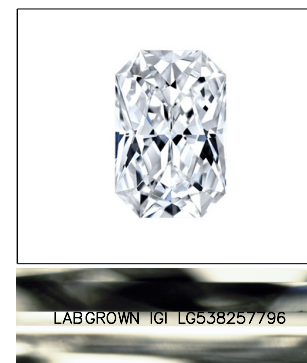


**KEY TO SYMBOLS**

Red symbols indicate internal characteristics.  
 Green symbols indicate external characteristics.

**GRADING SCALES**

COLOR GRADING SCALE	CL	NC	FT	VLT	LT	
	COLORLESS D-F	NEAR COLORLESS G-J	FAINT K-M	VERY LIGHT N-R	LIGHT S-Z	
CLARITY (10x) GRADING SCALE	FL	IF	VVS	VS	SI	I
	FLAWLESS INTERNALLY FLAWLESS	VERY VERY SLIGHTLY INCLUDED	VERY SLIGHTLY INCLUDED	SLIGHTLY INCLUDED	INCLUDED	



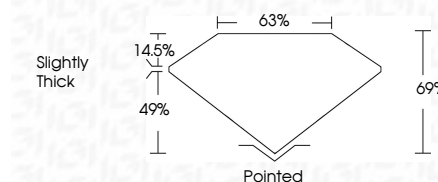
**LASERSCRIBE<sup>SM</sup>**

Sample Image Used

July 16, 2022  
 IGI Report Number **LG538257796**  
 Description **LABORATORY GROWN  
DIAMOND**  
 Shape and Cutting Style **CUT CORNERED  
RECTANGULAR MODIFIED  
BRILLIANT**  
 Measurements **8.11 X 5.93 X 4.09 MM**

**GRADING RESULTS**

Carat Weight **1.62 CARAT**  
 Color Grade **E**  
 Clarity Grade **SI 1**



**ADDITIONAL GRADING INFORMATION**

Polish **EXCELLENT**  
 Symmetry **EXCELLENT**  
 Fluorescence **NONE**  
 Inscription(s) **LABGROWN IGI LG538257796**

Comments: As Grown - No indication of post-growth treatment.  
 This Laboratory Grown Diamond was created by High Pressure High Temperature (HPHT) growth process. Type II



**IGI**

July 16, 2022	IGI Report No LG538257796	1.62 CARAT	E	Pointed	EXCELLENT	EXCELLENT	NONE	LABGROWN IGI LG538257796	As Grown - No indication of post-growth treatment.
	CUT CORNERED RECT. MODIFIED		SI 1	69%	EXCELLENT	EXCELLENT	NONE	LABGROWN IGI LG538257796	The Laboratory Grown Diamond was created by High Pressure High Temperature (HPHT) growth process.
	8.11 X 5.93 X 4.09 MM		69%	63%	EXCELLENT	EXCELLENT	NONE	LABGROWN IGI LG538257796	Type II
	Carat Weight	1.62 CARAT		Slightly Thick					
	Color Grade	E							
	Clarity Grade	SI 1							
	Depth	69%							
	Table	63%							
	Grade								
	Culet								
	Polish								
	Symmetry								
	Fluorescence								
	Inscription(s)								
	Comments:								