



ELECTRONIC COPY

LABORATORY GROWN DIAMOND REPORT

July 26, 2022
IGI Report Number LG537257234
Description LABORATORY GROWN DIAMOND
Shape and Cutting Style CUSHION BRILLIANT
Measurements 7.34 X 6.15 X 4.19 MM

GRADING RESULTS

Carat Weight 1.38 CARAT
Color Grade E
Clarity Grade VVS 2

ADDITIONAL GRADING INFORMATION

Polish EXCELLENT
Symmetry EXCELLENT
Fluorescence NONE

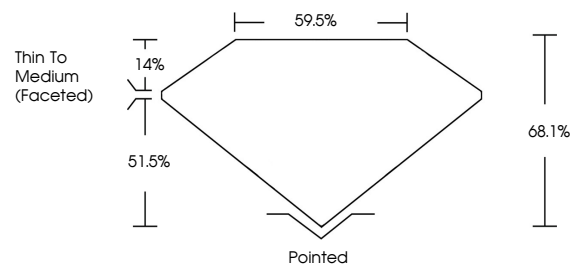
Inscription(s) LABGROWN (LGI) LG537257234

Comments: As Grown - No indication of post-growth treatment.

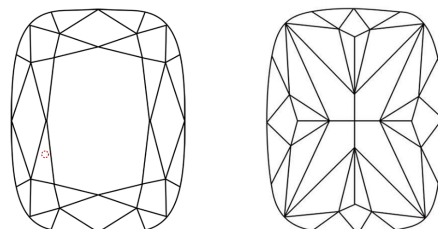
This Laboratory Grown Diamond was created by High Pressure High Temperature (HPHT) growth process. Type II

LG537257234

PROPORTIONS



CLARITY CHARACTERISTICS

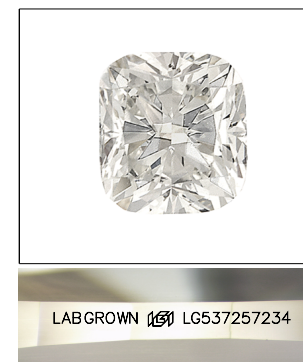


KEY TO SYMBOLS

Red symbols indicate internal characteristics.
Green symbols indicate external characteristics.

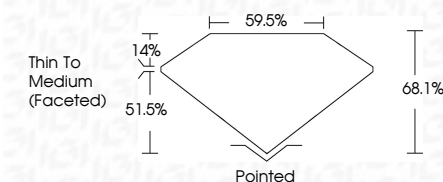
GRADING SCALES

Table showing color grading scales (CL, NC, FT, VLT, LT) and clarity (10x) grading scales (FL, IF, VVS, VS, SI, I) with their corresponding descriptions.



LASERSCRIBE SM
Sample Image Used

July 26, 2022
IGI Report Number LG537257234
Description LABORATORY GROWN DIAMOND
Shape and Cutting Style CUSHION BRILLIANT
Measurements 7.34 X 6.15 X 4.19 MM
GRADING RESULTS
Carat Weight 1.38 CARAT
Color Grade E
Clarity Grade VVS 2



ADDITIONAL GRADING INFORMATION

Polish EXCELLENT
Symmetry EXCELLENT
Fluorescence NONE
Inscription(s) LABGROWN (LGI) LG537257234

Comments: As Grown - No indication of post-growth treatment.
This Laboratory Grown Diamond was created by High Pressure High Temperature (HPHT) growth process. Type II



Summary of report details including IGI Report No. LG537257234, CUSHION BRILLIANT, 7.34 X 6.15 X 4.19 MM, 1.38 CARAT, Color Grade E, Clarity Grade VVS 2, Depth 68.1%, Table 59.5%, Girdle Thin To Medium (Faceted), Culet Pointed, Polish EXCELLENT, Symmetry EXCELLENT, Fluorescence NONE, Inscription(s) LABGROWN (LGI) LG537257234, and a detailed comment about the HPHT growth process.