



**INTERNATIONAL
GEMOLOGICAL
INSTITUTE**

ELECTRONIC COPY

**LABORATORY GROWN
DIAMOND REPORT**

**IGI LABORATORY GROWN
DIAMOND ID REPORT**

July 26, 2022
IGI Report Number **LG537246716**
CUSHION MODIFIED BRILLIANT
5.19 X 4.49 X 2.95 MM
Carat Weight 0.61 CARAT
Color Grade FANCY VIVID BLUE
Clarity Grade VS 2
Polish EXCELLENT
Symmetry EXCELLENT
Fluorescence NONE
Inscription(s) LABGROWN IGI
LG537246716

Comments: As Grown - No indication of post-growth treatment.
This Laboratory Grown Diamond was created by High Pressure High Temperature (HPHT) growth process.

LABORATORY GROWN DIAMOND REPORT

IGI LABORATORY GROWN DIAMOND IDENTIFICATION REPORT

July 26, 2022
IGI Report Number LG537246716
Description LABORATORY GROWN DIAMOND
Shape and Cutting Style CUSHION MODIFIED BRILLIANT
Measurements 5.19 X 4.49 X 2.95 MM

GRADING RESULTS

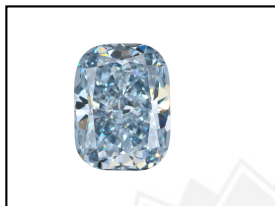
Carat Weight 0.61 CARAT
Color Grade FANCY VIVID BLUE
Clarity Grade VS 2

ADDITIONAL GRADING INFORMATION

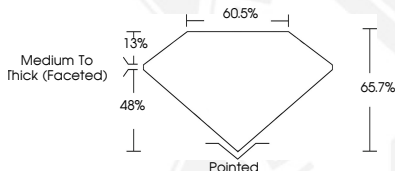
Polish EXCELLENT
Symmetry EXCELLENT
Fluorescence NONE
Inscription(s) LABGROWN IGI LG537246716

Comments: As Grown - No indication of post-growth treatment.
This Laboratory Grown Diamond was created by High Pressure High Temperature (HPHT) growth process.

LG537246716



LASERSCRIBESM
Sample Images Used



THIS DOCUMENT WAS PRODUCED WITH THE FOLLOWING SECURITY MEASURES: SPECIAL DOCUMENT PAPER, INK SCREENS, WATERMARK, BACKGROUND DESIGN, HOLOGRAM AND OTHER SECURITY FEATURES NOT LISTED AND DO EXCEED DOCUMENT SECURITY INDUSTRY GUIDELINES.

For terms & conditions and to verify this report, please visit www.igi.org

**IGI LABORATORY GROWN
DIAMOND ID REPORT**

July 26, 2022
IGI Report Number **LG537246716**
CUSHION MODIFIED BRILLIANT
5.19 X 4.49 X 2.95 MM
Carat Weight 0.61 CARAT
Color Grade FANCY VIVID BLUE
Clarity Grade VS 2
Polish EXCELLENT
Symmetry EXCELLENT
Fluorescence NONE
Inscription(s) LABGROWN IGI
LG537246716

Comments: As Grown - No indication of post-growth treatment.
This Laboratory Grown Diamond was created by High Pressure High Temperature (HPHT) growth process.