



**INTERNATIONAL  
GEMOLOGICAL  
INSTITUTE**

**ELECTRONIC COPY**

**LABORATORY GROWN  
DIAMOND REPORT**

**IGI LABORATORY GROWN  
DIAMOND ID REPORT**

July 21, 2022  
IGI Report Number **LG537241949**

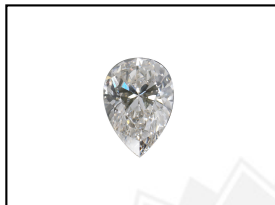
**LABORATORY GROWN DIAMOND REPORT**

**LG537241949**

**PEAR BRILLIANT**  
**7.07 X 4.52 X 2.89 MM**  
Carat Weight 0.57 CARAT  
Color Grade E  
Clarity Grade VS 1  
Polish EXCELLENT  
Symmetry VERY GOOD  
Fluorescence NONE  
Inscription(s) LABGROWN IGI  
LG537241949

**IGI LABORATORY GROWN DIAMOND IDENTIFICATION REPORT**

July 21, 2022  
IGI Report Number LG537241949  
Description LABORATORY GROWN DIAMOND  
Shape and Cutting Style PEAR BRILLIANT  
Measurements 7.07 X 4.52 X 2.89 MM



Comments: This Laboratory Grown Diamond was created by Chemical Vapor Deposition (CVD) growth process and may include post-growth treatment. Type Ila

**GRADING RESULTS**

Carat Weight 0.57 CARAT  
Color Grade E  
Clarity Grade VS 1

**LASERSCRIBE<sup>SM</sup>**  
Sample Images Used



**ADDITIONAL GRADING INFORMATION**

Polish EXCELLENT  
Symmetry VERY GOOD  
Fluorescence NONE  
Inscription(s) LABGROWN IGI LG537241949

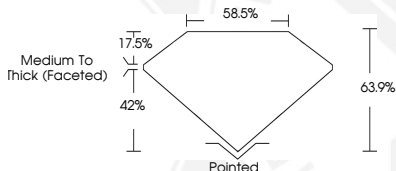
**IGI LABORATORY GROWN  
DIAMOND ID REPORT**

July 21, 2022  
IGI Report Number **LG537241949**

Comments: This Laboratory Grown Diamond was created by Chemical Vapor Deposition (CVD) growth process and may include post-growth treatment. Type Ila

**PEAR BRILLIANT**  
**7.07 X 4.52 X 2.89 MM**  
Carat Weight 0.57 CARAT  
Color Grade E  
Clarity Grade VS 1  
Polish EXCELLENT  
Symmetry VERY GOOD  
Fluorescence NONE  
Inscription(s) LABGROWN IGI  
LG537241949

Comments: This Laboratory Grown Diamond was created by Chemical Vapor Deposition (CVD) growth process and may include post-growth treatment. Type Ila



THIS DOCUMENT WAS PRODUCED WITH THE FOLLOWING SECURITY MEASURES: SPECIAL DOCUMENT PAPER, INK SCREENS, WATERMARK, BACKGROUND DESIGN, HOLOGRAM AND OTHER SECURITY FEATURES NOT LISTED AND DO EXCEED DOCUMENT SECURITY INDUSTRY GUIDELINES.

For terms & conditions and to verify this report, please visit [www.igi.org](http://www.igi.org)