



**INTERNATIONAL
GEMOLOGICAL
INSTITUTE**

ELECTRONIC COPY

**LABORATORY GROWN
DIAMOND REPORT**

**IGI LABORATORY GROWN
DIAMOND ID REPORT**

July 18, 2022
IGI Report Number **LG537238546**
**CUT CORNERED RECTANGULAR
MODIFIED BRILLIANT**
6.39 X 4.29 X 2.95 MM
Carat Weight 0.71 CARAT
Color Grade G
Clarity Grade VS 2
Polish VERY GOOD
Symmetry VERY GOOD
Fluorescence NONE
Inscription(s) LABGROWN IGI
LG537238546

LABORATORY GROWN DIAMOND REPORT

IGI LABORATORY GROWN DIAMOND IDENTIFICATION REPORT

July 18, 2022
IGI Report Number LG537238546
Description LABORATORY GROWN DIAMOND
Shape and Cutting Style CUT CORNERED RECTANGULAR MODIFIED
BRILLIANT
Measurements 6.39 X 4.29 X 2.95 MM

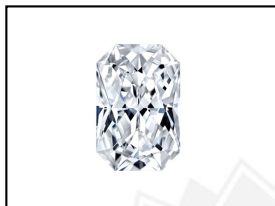
GRADING RESULTS

Carat Weight 0.71 CARAT
Color Grade G
Clarity Grade VS 2

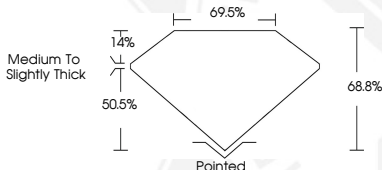
ADDITIONAL GRADING INFORMATION

Polish VERY GOOD
Symmetry VERY GOOD
Fluorescence NONE
Inscription(s) LABGROWN IGI LG537238546

Comments: This Laboratory Grown Diamond was created by
Chemical Vapor Deposition (CVD) growth process and may include
post-growth treatment.
Type IIa



LASERSCRIBESM
Sample Images Used



Comments: This Laboratory Grown
Diamond was created by
Chemical Vapor Deposition (CVD)
growth process and may include
post-growth treatment.
Type IIa

**IGI LABORATORY GROWN
DIAMOND ID REPORT**

July 18, 2022
IGI Report Number **LG537238546**
**CUT CORNERED RECTANGULAR
MODIFIED BRILLIANT**
6.39 X 4.29 X 2.95 MM
Carat Weight 0.71 CARAT
Color Grade G
Clarity Grade VS 2
Polish VERY GOOD
Symmetry VERY GOOD
Fluorescence NONE
Inscription(s) LABGROWN IGI
LG537238546

Comments: This Laboratory Grown
Diamond was created by
Chemical Vapor Deposition (CVD)
growth process and may include
post-growth treatment.
Type IIa

THIS DOCUMENT WAS PRODUCED WITH THE FOLLOWING SECURITY MEASURES: SPECIAL DOCUMENT PAPER, INK SCREENS, WATERMARK, BACKGROUND DESIGN, HOLOGRAM AND OTHER SECURITY FEATURES NOT LISTED AND DO EXCEED DOCUMENT SECURITY INDUSTRY GUIDELINES.

For terms & conditions and to verify this report, please visit www.igi.org