



ELECTRONIC COPY

LABORATORY GROWN DIAMOND REPORT

July 18, 2022
IGI Report Number LG537225756
Description LABORATORY GROWN DIAMOND
Shape and Cutting Style CUT CORNERED RECTANGULAR MODIFIED BRILLIANT
Measurements 7.62 X 5.68 X 3.95 MM

GRADING RESULTS

Carat Weight 1.54 CARAT
Color Grade F
Clarity Grade VVS 2

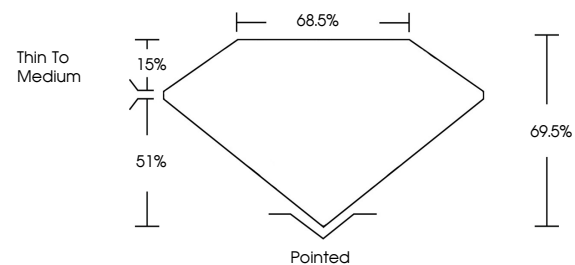
ADDITIONAL GRADING INFORMATION

Polish EXCELLENT
Symmetry EXCELLENT
Fluorescence NONE
Inscription(s) LABGROWN (IGI) LG537225756

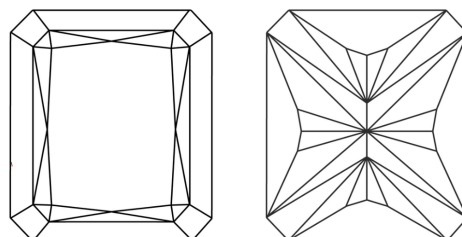
Comments: This Laboratory Grown Diamond was created by Chemical Vapor Deposition (CVD) growth process and may include post-growth treatment. Type IIa

LG537225756

PROPORTIONS



CLARITY CHARACTERISTICS



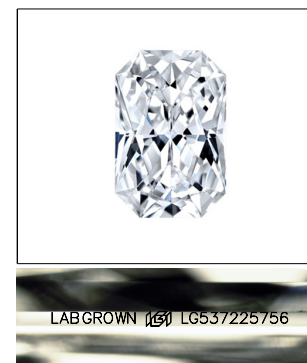
KEY TO SYMBOLS

Red symbols indicate internal characteristics.
Green symbols indicate external characteristics.

LABORATORY GROWN DIAMOND REPORT

GRADING SCALES

Table with 2 rows and 5 columns showing color grading scales (CL, NC, FT, VLT, LT) and clarity (10x) grading scales (FL, IF, VVS, VS, SI, I).



LASERSCRIBE SM
Sample Image Used

LABORATORY GROWN DIAMOND REPORT

July 18, 2022
IGI Report Number LG537225756
Description LABORATORY GROWN DIAMOND
Shape and Cutting Style CUT CORNERED RECTANGULAR MODIFIED BRILLIANT
Measurements 7.62 X 5.68 X 3.95 MM

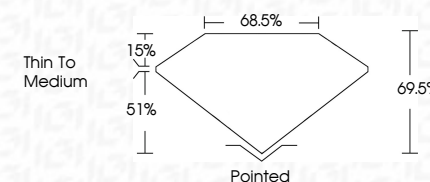
GRADING RESULTS

Carat Weight 1.54 CARAT
Color Grade F
Clarity Grade VVS 2

ADDITIONAL GRADING INFORMATION

Polish EXCELLENT
Symmetry EXCELLENT
Fluorescence NONE
Inscription(s) LABGROWN (IGI) LG537225756

Comments: This Laboratory Grown Diamond was created by Chemical Vapor Deposition (CVD) growth process and may include post-growth treatment. Type IIa



July 18, 2022
IGI Report No. LG537225756
CUT CORNERED RECT. MODIFIED
7.62 X 5.68 X 3.95 MM
1.54 CARAT
F
VVS 2
68.5%
68.5%
Thin To Medium
Pointed
EXCELLENT
EXCELLENT
NONE
LABGROWN (IGI) LG537225756

Comments: This Laboratory Grown Diamond was created by Chemical Vapor Deposition (CVD) growth process and may include post-growth treatment. Type IIa