



ELECTRONIC COPY

LABORATORY GROWN DIAMOND REPORT

July 29, 2022	
IGI Report Number	LG536299973
Description	LABORATORY GROWN DIAMOND
Shape and Cutting Style	ROUND BRILLIANT
Measurements	8.06 - 8.15 X 4.90 MM

GRADING RESULTS

Carat Weight	2.01 CARATS
Color Grade	FANCY VIVID BLUE
Clarity Grade	VS 2
Cut Grade	EXCELLENT

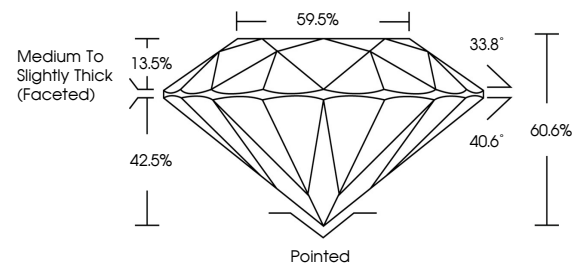
ADDITIONAL GRADING INFORMATION

Polish	EXCELLENT
Symmetry	EXCELLENT
Fluorescence	NONE
Inscription(s)	LABGROWN IG LG536299973

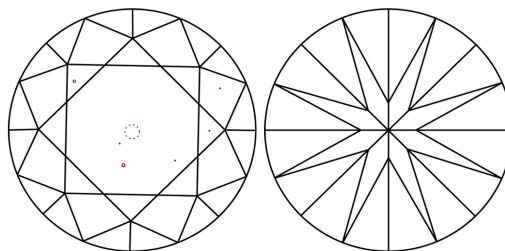
Comments: This Laboratory Grown Diamond was created by Chemical Vapor Deposition (CVD) growth process.
Indications of post-growth treatment.

LG536299973

PROPORTIONS



CLARITY CHARACTERISTICS



KEY TO SYMBOLS

Red symbols indicate internal characteristics.
Green symbols indicate external characteristics.

GRADING SCALES

COLOR GRADING SCALE	CL		NC	FT	VLT	LT
	COLORLESS D-F	NEAR COLORLESS G-J		FAINT K-M	VERY LIGHT N-R	LIGHT S-Z
CLARITY (10x) GRADING SCALE	FL	IF	VVS	VS	SI	I
	FLAWLESS INTERNALLY FLAWLESS		VERY VERY SLIGHTLY INCLUDED	VERY SLIGHTLY INCLUDED	SLIGHTLY INCLUDED	INCLUDED

LASERSCRIBESM

Sample Image Used



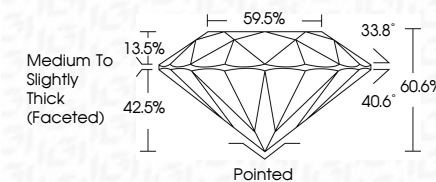
© IGI 2020, International Gemological Institute

FD - 10 20

www.igi.org

LABORATORY GROWN DIAMOND REPORT

July 29, 2022	
IGI Report Number	LG536299973
Description	LABORATORY GROWN DIAMOND
Shape and Cutting Style	ROUND BRILLIANT
Measurements	8.06 - 8.15 X 4.90 MM
GRADING RESULTS	
Carat Weight	2.01 CARATS
Color Grade	FANCY VIVID BLUE
Clarity Grade	VS 2
Cut Grade	EXCELLENT



ADDITIONAL GRADING INFORMATION

Polish	EXCELLENT
Symmetry	EXCELLENT
Fluorescence	NONE
Inscription(s)	LABGROWN IGI LG536299973

Comments: This Laboratory Grown Diamond was created by Chemical Vapor Deposition (CVD) growth process.
Indications of post-growth treatment.



July 29, 2022	Report No. LGS369973
ROUND BRILLIANT	
Color: 0.00 - 0.15 X 4.90 MM	
Carat Weight	2.00
Color Grade	FANCY
Clarity Grade	
Cut Grade	
Depth	
Table	
Grade	Medium Thick
Quiet	
Polish	
Symmetry	
Fluorescence	
Inspection(s)	
Comments:	
This Laboratory Grown Diamond was analyzed by Chemical Vapor Deposition (CVD) growth process and is not a natural diamond.	

This Laboratory Grown Diamond was created by Chemical Vapor Deposition (CVD) growth process.