



ELECTRONIC COPY

LABORATORY GROWN DIAMOND REPORT

July 25, 2022
IGI Report Number LG536298414
Description LABORATORY GROWN DIAMOND
Shape and Cutting Style ROUND BRILLIANT
Measurements 7.57 - 7.61 X 4.72 MM

GRADING RESULTS

Carat Weight 1.70 CARAT
Color Grade FANCY VIVID PINK
Clarity Grade VS 2
Cut Grade IDEAL

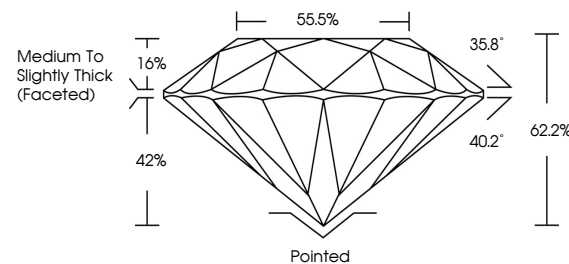
ADDITIONAL GRADING INFORMATION

Polish EXCELLENT
Symmetry EXCELLENT
Fluorescence SLIGHT
Inscription(s) LABGROWN IGI LG536298414

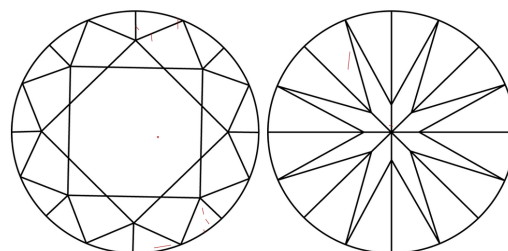
Comments: This Laboratory Grown Diamond was created by Chemical Vapor Deposition (CVD) growth process. Indications of post-growth treatment.

LG536298414

PROPORTIONS



CLARITY CHARACTERISTICS



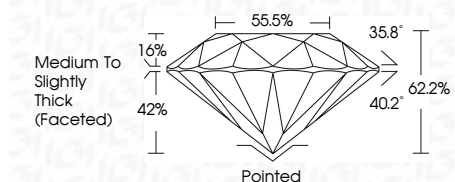
KEY TO SYMBOLS

Red symbols indicate internal characteristics. Green symbols indicate external characteristics.

GRADING SCALES

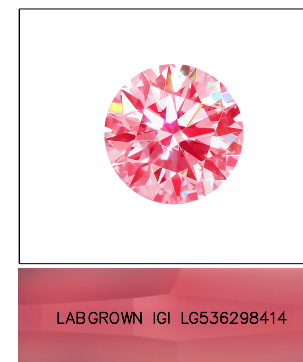
Table showing color grading scales (CL, NC, FT, VLT, LT) and clarity (10x) grading scales (FL, IF, VVS, VS, SI, I) with their corresponding descriptions.

July 25, 2022
IGI Report Number LG536298414
Description LABORATORY GROWN DIAMOND
Shape and Cutting Style ROUND BRILLIANT
Measurements 7.57 - 7.61 X 4.72 MM
GRADING RESULTS
Carat Weight 1.70 CARAT
Color Grade FANCY VIVID PINK
Clarity Grade VS 2
Cut Grade IDEAL



ADDITIONAL GRADING INFORMATION

Polish EXCELLENT
Symmetry EXCELLENT
Fluorescence SLIGHT
Inscription(s) LABGROWN IGI LG536298414
Comments: This Laboratory Grown Diamond was created by Chemical Vapor Deposition (CVD) growth process. Indications of post-growth treatment.



LABGROWN IGI LG536298414

LASERSCRIBE SM

Sample Image Used



July 25, 2022
IGI Report No LG536298414
ROUND BRILLIANT
Carat Weight 1.70 CARAT
Color Grade FANCY VIVID PINK
Clarity Grade VS 2
Cut Grade IDEAL
Depth 62.2%
Table 55.5%
Girdle Medium To Slightly Thick (Faceted)
Culet Pointed
Polish EXCELLENT
Symmetry EXCELLENT
Fluorescence SLIGHT
Inscription(s) LABGROWN IGI LG536298414
Comments: This Laboratory Grown Diamond was created by Chemical Vapor Deposition (CVD) growth process. Indications of post-growth treatment.