



**INTERNATIONAL
GEMOLOGICAL
INSTITUTE**

LABORATORY GROWN DIAMOND REPORT

IGI LABORATORY GROWN DIAMOND IDENTIFICATION REPORT

July 25, 2022
 IGI Report Number **LG536298254**
 Description **LABORATORY GROWN DIAMOND**
 Shape and Cutting Style **PEAR BRILLIANT**
 Measurements **7.53 X 4.48 X 2.86 MM**

GRADING RESULTS

Carat Weight **0.57 CARAT**
 Color Grade **FANCY INTENSE PINK**
 Clarity Grade **SI 1**

ADDITIONAL GRADING INFORMATION

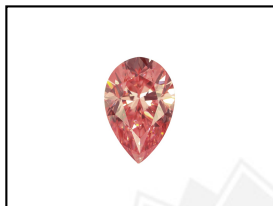
Polish **EXCELLENT**
 Symmetry **VERY GOOD**
 Fluorescence **SLIGHT**
 Inscription(s) **LABGROWN IGI LG536298254**

Comments: This Laboratory Grown Diamond was created by Chemical Vapor Deposition (CVD) growth process. Indications of post-growth treatment.

ELECTRONIC COPY

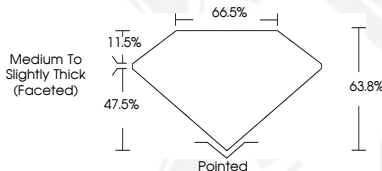
**LABORATORY GROWN
DIAMOND REPORT**

LG536298254



LABGROWN IGI LG536298254

LASERSCRIBESM
Sample Images Used



**IGI LABORATORY GROWN
DIAMOND ID REPORT**

July 25, 2022
 IGI Report Number **LG536298254**
PEAR BRILLIANT
7.53 X 4.48 X 2.86 MM
 Carat Weight **0.57 CARAT**
 Color Grade **FANCY INTENSE PINK**
 Clarity Grade **SI 1**
 Polish **EXCELLENT**
 Symmetry **VERY GOOD**
 Fluorescence **SLIGHT**
 Inscription(s) **LABGROWN IGI LG536298254**

Comments: This Laboratory Grown Diamond was created by Chemical Vapor Deposition (CVD) growth process. Indications of post-growth treatment.

**IGI LABORATORY GROWN
DIAMOND ID REPORT**

July 25, 2022
 IGI Report Number **LG536298254**
PEAR BRILLIANT
7.53 X 4.48 X 2.86 MM
 Carat Weight **0.57 CARAT**
 Color Grade **FANCY INTENSE PINK**
 Clarity Grade **SI 1**
 Polish **EXCELLENT**
 Symmetry **VERY GOOD**
 Fluorescence **SLIGHT**
 Inscription(s) **LABGROWN IGI LG536298254**

Comments: This Laboratory Grown Diamond was created by Chemical Vapor Deposition (CVD) growth process. Indications of post-growth treatment.

THIS DOCUMENT WAS PRODUCED WITH THE FOLLOWING SECURITY MEASURES: SPECIAL DOCUMENT PAPER, INK SCREENS, WATERMARK, BACKGROUND DESIGN, HOLOGRAM AND OTHER SECURITY FEATURES NOT LISTED AND DO EXCEED DOCUMENT SECURITY INDUSTRY GUIDELINES.

For terms & conditions and to verify this report, please visit www.igi.org