



ELECTRONIC COPY

LABORATORY GROWN DIAMOND REPORT

July 22, 2022

IGI Report Number **LG536297255**

Description	LABORATORY GROWN DIAMOND
-------------	-----------------------------

Shape and Cutting Style **PRINCESS CUT**

Measurements 6.98 X 6.84 X 4.82 MM

GRADING RESULTS

Carat Weight 2.02 CARATS

Color Grade **FANCY VIVID PINK**

Clarity Grade	SI 2
---------------	------

ADDITIONAL GRADING INFORMATION

Polish **EXCELLENT**Symmetry **EXCELLENT**

Fluorescence SLIGHT

Inscription(s) LABGROWN IGI LG536297255

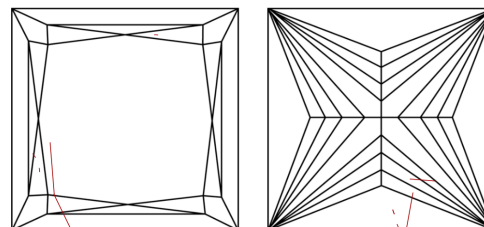
Comments: This Laboratory Grown Diamond was created by Chemical Vapor Deposition (CVD) growth process.

Indications of post-growth treatment.

Diagram illustrating the proportions of a diamond-shaped object (likely a gemstone or tool head) with the following dimensions:

- Top width: 67%
- Top thickness: 13%
- Bottom thickness: 54%
- Overall height: 70.5%
- Top edge description: Medium To Lightly Thick
- Bottom edge description: Pointed

CLARITY CHARACTERISTICS

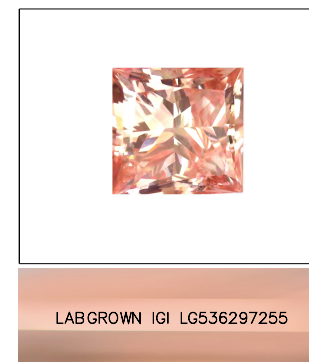


KEY TO SYMBOLS

Red symbols indicate internal characteristics.
Green symbols indicate external characteristics.

GRADING SCALES

COLOR GRADING SCALE	CL		NC		FT		VLT		LT	
	COLORLESS D-F		NEAR COLORLESS G-J		FAINT K-M		VERY LIGHT N-R		LIGHT S-Z	
CLARITY (10x) GRADING SCALE	FL	IF	VVS		VS		SI		I	
	FLAWLESS INTERNALLY FLAWLESS		VERY VERY SLIGHTLY INCLUDED		VERY SLIGHTLY INCLUDED		SLIGHTLY INCLUDED		INCLUDED	

LASERSCRIBESM

Sample Image Used



© IGI 2020, International Gemological Institute

FD - 10 20

LABORATORY GROWN DIAMOND REPORT

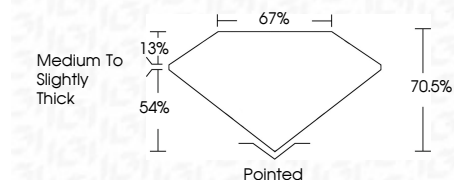
July 22, 2022	
IGI Report Number	LG536297255
Description	LABORATORY GROWN

Shape and Cutting Style **PRINCESS CUT**

Measurements **6.98 X 6.84 X 4.82 MM**

GRADING RESULTS

Carat Weight **2.02 CARATS**

Color Grade **FANCY VIVID PINK**Clarity Grade SI 2

ADDITIONAL GRADING INFORMATION

Polish **EXCELLENT**Symmetry **EXCELLENT**

Fluorescence SLIGHTLY

Inscription(s) LABGROWN IGI LG536297255

Comments: This Laboratory Grown Diamond was created by Chemical Vapor Deposition (CVD) growth process.
Indications of post-growth treatment.

[illegible]