



# INTERNATIONAL GEMOLOGICAL INSTITUTE

ELECTRONIC COPY

## LABORATORY GROWN DIAMOND REPORT

LG536296901

### LABORATORY GROWN DIAMOND REPORT

#### IGI LABORATORY GROWN DIAMOND IDENTIFICATION REPORT

November 16, 2022

IGI Report Number

LG536296901

Description

LABORATORY GROWN DIAMOND

Shape and Cutting Style

OVAL BRILLIANT

Measurements

6.71 X 4.60 X 2.87 MM

#### GRADING RESULTS

Carat Weight

0.56 CARAT

Color Grade

FANCY INTENSE PINK

Clarity Grade

VS 1

#### ADDITIONAL GRADING INFORMATION

Polish

EXCELLENT

Symmetry

VERY GOOD

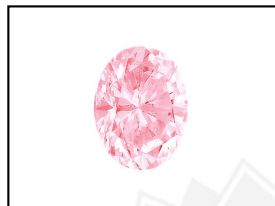
Fluorescence

SLIGHT

Inscription(s)

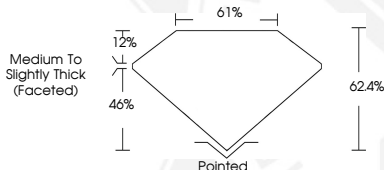
LABGROWN IGI LG536296901

Comments: This Laboratory Grown Diamond was created by Chemical Vapor Deposition (CVD) growth process. Indications of post-growth treatment.



LABGROWN IGI LG536296901

LASERSCRIBE<sup>SM</sup>  
Sample Images Used



#### IGI LABORATORY GROWN DIAMOND ID REPORT

November 16, 2022

IGI Report Number LG536296901

OVAL BRILLIANT

6.71 X 4.60 X 2.87 MM

Carat Weight 0.56 CARAT

Color Grade FANCY INTENSE PINK

Clarity Grade VS 1

Polish EXCELLENT

Symmetry VERY GOOD

Fluorescence SLIGHT

Inscription(s) LABGROWN IGI LG536296901

Comments: This Laboratory Grown Diamond was created by Chemical Vapor Deposition (CVD) growth process. Indications of post-growth treatment.

#### IGI LABORATORY GROWN DIAMOND ID REPORT

November 16, 2022

IGI Report Number LG536296901

OVAL BRILLIANT

6.71 X 4.60 X 2.87 MM

Carat Weight 0.56 CARAT

Color Grade FANCY INTENSE PINK

Clarity Grade VS 1

Polish EXCELLENT

Symmetry VERY GOOD

Fluorescence SLIGHT

Inscription(s) LABGROWN IGI LG536296901

Comments: This Laboratory Grown Diamond was created by Chemical Vapor Deposition (CVD) growth process. Indications of post-growth treatment.



THIS DOCUMENT WAS PRODUCED WITH THE FOLLOWING SECURITY MEASURES: SPECIAL DOCUMENT PAPER, INK SCREENS, WATERMARK, BACKGROUND DESIGN, HOLOGRAM AND OTHER SECURITY FEATURES NOT LISTED AND DO EXCEED DOCUMENT SECURITY INDUSTRY GUIDELINES.

For terms & conditions and to verify this report, please visit [www.igi.org](http://www.igi.org)